

TRIMARK

SPORTSWEAR GROUP

18
new
styles

BRAND POP

A closer look at how some of the most famous brands play a larger role in society

PG.43

power of gifting

PG.21

Read on to see why we think that cash is no longer the incentive king when it comes to gifts

FACT vs. fiction

Find out everything you need to know about us

2010 SPRING trend report

Functional finishes
hybrid fabrics, textile
combinations & more

PG.7

2010
SPRING
COLLECTION



35TH YEAR OF BEING
THE NUMBER

1 ONE

CHOICE FOR LOGO APPAREL **IN CANADA**



makin' it
easy
for you

www.brandsthatfit.ca



5 Golf Shirts

2010
SPRING
COLLECTION

trend report

Every year we travel the globe on the search for the latest styles and innovations in the apparel industry... and here's our take on the top trends.



22 Performance Tees + Layering



27 Novelty Fleece

07 SUSTAINABLE CLOTHING

11 TEXTILE COMBINATIONS

19 FUNCTIONAL FINISHES

27 HYBRID FABRICS

34 LAYERED DRESSING

37 EASE OF MOVEMENT

39 SEAMS GET REFLECTIVE



34 Outer Wear

ARTICLES



13 FACT VS. FICTION

Find out everything you need to know about how we do what we do.



21 POWER OF GIFTING

Read on to see why we think that cash is no longer the incentive king when it comes to gifts.



43 BRAND POP

A closer look at how some of the most famous brands play a larger role in society.

BRANDS THAT FIT.™

As a market leader for 35 years, we continue to develop new and innovative products that utilise enhanced fabric technologies, which deliver outstanding features with lasting benefits in every style.



↘16252 - P.16

ONTOUR™



The **ONTOUR™** collection is engineered to make you feel good and provide elegance on or off the course. The evolution of WEBTech™, along with the science of fabric construction, has increased the comfort and become a pillar of distinction.

LANDMARK™



↘96213 - P.18

The **Landmark™** collection is constructed using time honoured methods which ensure a durable lasting style. These designs highlight our classics and offer a vibrant and expansive colour palette. These styles are all about keeping it simple – startlingly simple.



Elevate Sport is a new collection that highlights our latest innovations into one fashion forward brand. Elevate Sport was created as the official brand of licensed merchandise for the 2010 Winter Olympics.



↘18114/98114 - P.32



ELEVATE

SPORT



↘16647

NEXUS APPAREL™



Cool refined comfort for work and beyond. The **Nexus Apparel™** collection elevates the style of classics with rich fabrics and intricate details. Sophisticated woven shirts and bonded shells all make an impeccably fresh statement.

OUTER BOUNDARY™



↘92929 - P.40

Outer Boundary™ collections are designed to protect like armour against the elements. This collection allows you to stay out longer, whether in the heat or on the ice. With SMARTech™ innovations we are constantly pushing the boundaries within this offering.



WHAT DOES WEBTECH™ DO?

These shirts are constructed with textile fibres that act as a powerful capillary to quickly absorb and channel moisture away from the body, towards the surface of the garment, for quick evaporation and maximum breathability.

The high twist construction makes the fabric silkier and smoother to the touch compared to ordinary polyester, or other high twist yarns.



Incorporates some high-tech features for better performance attributes.



Wicks, evaporates, breathes: all 300 Series features with more advanced style and fit features.



High-tech yarns wick, evaporate and breathe for enhanced moisture management.



Wicks, evaporates, breathes: all 500 Series features with more advanced yarns and Anti-bacterial qualities.

WHAT IS SMARTeCH™?

A highly technical product providing beneficial, identifiable features through some of the latest technological developments in 'smart' textiles.

'Smart' Textiles by SMARTeCH™ are textiles designed to detect and respond to specific condition in their environment via one or more of the following methods:

BIO-CHEMICAL TECHNOLOGY - altering the composition or finish of a fibre / fabrication to add a feature, such as waterproofing, breathability, antimicrobial properties, etc.

MECHANICAL INNOVATION - engineering a fibre, such as it's shape, diameter, or inner architecture to yield special properties.



Highly technical product including bonded fabrics and finishing treatments.



Highly technical product: all 500 Series features, including thermal insulation, wind resistance and seam sealing.



Highly technical product: all 300 Series features, including biochemical technology, waterproof and stain repellency.

WHAT IS EZ-CARE™?

Only our EZ-Care™ collection repels spills and looks smooth straight out of the dryer. These garments are built to last and endure the day-to-day grind without fading, shrinking or pilling. Just wash-and-wear, no need to dry clean.

These benefits are the result of the combination of fibres and the complexity of the knits. There are no chemical treatments and as a result these properties are environmentally friendly and last for the life of the garment.

Look for the EZ-Care™ Logo.



In the washer, in the dryer, on your back virtually wrinkle free.



trimarkswear.com/webtech



trimarkswear.com/smartech



EZ-CARE

trimarkswear.com/ezcare



Your Brand's sustainability is important and Trimark's Evolve™ Certification ensures that your products are socially responsible and produced in a socially compliant method.

At Trimark Sportswear, we believe that it's everyone's responsibility to be Socially Responsible – therefore we have chosen to pursue long-term goals that are both good for our society, and also our environment.

To ensure that we meet these goals, we have engaged the services of an internationally recognized 3rd party audit firm specializing not only in auditing, but the continual development of best practices in factories across the globe.

For details of our compliance standards please visit trimarksportswear.com/conscience

➤ Look for our **Evolve Certification**



throughout the 2010 magalogue.

Keep your company **green!**

We have developed a smart and environmentally friendly collection, designed to answer that question. Keep an eye out for these **Evolve™** styles throughout our 2010 Spring Magalogue.

716000/796000



➤ **corvus** PAGE 6

16339/96339



➤ **linden** PAGE 8

16399/96399



➤ **perico** PAGE 9

16374/96374



➤ **komati** PAGE 23

18149/98149



➤ **volcan** PAGE 31

For more information go to www.trimarksportswear.com/evolve

golf shirts

new style

16211/96211 - P.14 ↙



pricing levels ↙
P1 pricing shown

16211 | 96211
P.14 \$29.80



NEW

16252 | 96252 | 56252
P.16 \$26.40/\$25.00



16213 | 96213
P.18 \$32.40



NEW

16626 | 96626
P.20 \$29.60



16399 | 96399
P.9 \$48.00



716000 | 796000
P.6 \$57.40



16339 | 96339
P.8 \$56.00



16505 | 96505
P.10 \$57.40



NEW

16384 | 96384
P.12 \$63.40



Good (\$40 & Under)

Better (\$40 - \$50)

Best (\$50 & Up)

151

Dime

429

Chill

486

Pacific

575

Navy

655

Juniper

995

Black



V-notch side slits

575

Self fabric collar

Shaped seams for a flattering fit (Women's Only)

655



recycled

151



429

(Women's Only)



486

(Men's Only)



575



655



995



Front placket with no-button closure

corvus
Tech
polo

Men's **716000**
Women's **796000**

sizes

Men's: S - 3XL
Women's: XS - 2XL

fabric

53% Micro polyester / 47% Recycled polyester drop needle rib with wicking finish.
190 g/m² (9.3 oz/linear yd).

pricing (cdn)

QTY	\$(A)
1-99	57.40
100-249	51.80
250-499	48.80
500+	45.80



CROSSOVER



EVOLVE



EZ-CARE



WEBTECH 300




BREATHABLE



WICKING



ELEVATE
SPORT



Self fabric collar features front placket with no-button closure. V-notch side slit detail. Women's version features shaped seams for a more flattering fit.



**SPRING 2010 TREND REPORT:
SUSTAINABLE CLOTHING**

Interest in environmentally sustainable clothing continues to gain momentum, so expect increased focus on eco-friendly fabrics and finishes. Industry innovation means there will be more choice than ever before to meet demand from individuals and organizations in this high-growth area.

corvus

- 136 Limestone
- 181 Wood
- 431 Olympic Blue
- 570 Polo Blue
- 995 Black



Raglan sleeve polo features WEBTech™ 300 wicking fabric for breathable moisture management. Drop needle stripe textured fabric. Wider hem at sleeve and bottom hem. Self-fabric collar. Three-button placket with angle box stitching at the bottom. Double bartack stitching at slit.



linden
Coconut charcoal textured polo

Men's **16339**
Women's **96339**

sizes
Men's: S – 3XL
Women's: XS – 2XL

fabric
100% Polyester (57% Micro polyester / 43% Coconut charcoal polyester) drop needle stripe with wicking finish. 180 g/m² (8.8 oz/linear yd).

pricing (cdn)

QTY	\$(A)
1-99	56.00
100-249	50.40
250-499	47.60
500+	44.80





recycled

WEBTech™ 300 fabrication



369

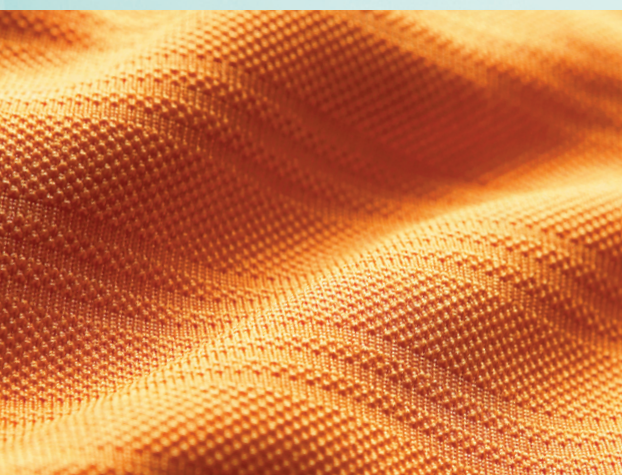


V-neck crew (Women's Only)

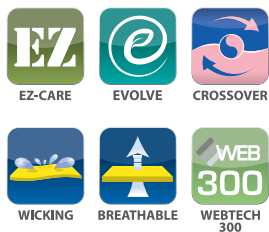
429

Horizontal tonal stripe texture

Advanced WEBTech™ 300 wicking fabric provides breathable moisture management. Horizontal tonal stripe texture plus darker tonal 'X' shaped bartack at slits (women's). V-neck crew and cap sleeve (women's).



262	Tangerine
369	Vintage Red
429	Chill
431	Olympic Blue
575	Navy
651	Green Tea
995	Black



pricing (cdn)

QTY	\$(A)
1-99	48.00
100-249	43.20
250-499	40.80
500+	38.40

sizes

Men's: S - 3XL
Women's: XS - 2XL

fabric

70% Recycled micro polyester / 30% Micro polyester horizontal texture stripe with wicking finish. 170 g/m² (8.4 oz/linear yd).

perico
Recycled textured polo

Men's 16399
Women's 96399

Reflective heat transfer at back shoulders

Five-button placket (Women's Only)

new style

270
(back view)

Diminishing piping at front armhole and side body

575

125

White

270

Saffron

369

Vintage Red

431

Olympic Blue

575

Navy

995

Black

new style

125



270



369



431



575



995



Contrast piping with side mesh insert



solway
Short sleeve polo

Men's **16505**
Women's **96505**

sizes

Men's: S - 3XL
Women's: XS - 2XL

fabric

100% Micro polyester with wicking finish. 155 g/m² (7.7 oz/linear yd).

100% Polyester mesh with wicking finish at underarm and back panel (Men's Only). 155 g/m² (7.7 oz/linear yd).

pricing (cdn)

QTY	\$ (A)
1-99	57.40
100-249	51.80
250-499	48.80
500+	45.80



CROSSOVER



EZ-CARE



WEBTECH 500



BREATHABLE



WICKING



Features self-fabric collar with contrast inner neck tape. Diminishing piping at front armhole and side body. Reflective heat transfer at back shoulders. Men's version features three-button placket and reflective heat transfer logo at back left hem. Women's version with five-button placket and reflective heat transfer logo at front left hem.



ELEVATE
SPORT

new style

**↘ SPRING 2010 TREND REPORT:
TEXTILE COMBINATIONS**

Combine various textures in one garment to create apparel that is both fashionable and functional with quality hybrid construction. Designers have utilized various textile combinations in order to achieve the optimum in performance attributes, with the Soloway golf shirt. The wicking smooth knit works with strategically placed textured mesh for comfort and flexibility. In addition, welded reflective slashes in the back shoulder area provide enhanced visibility for early morning or late evening activities.

125

White

369

Vintage Red

431

Olympic Blue

575

Navy

995

Black

Yarn-dyed silver sheen stripe panels

Dyed-to-match pearlized button placket

Dyed-to-match mesh side and underarm panels



575

431



Cutting-edge WEBTech™ 300 fabrication offers breathable moisture management. Yarn-dyed stripe panels. Seam highlighted with dyed-to-match narrow, fashionable coverstitch dyed-to-match mesh side and underarm panels. Self-fabric collar with dyed-to-match pearlized button placket.

125



369



431



575



995



onyx
Panel stripe polo

Men's **16384**
Women's **96384**

sizes

Men's: S - 3XL
Women's: XS - 2XL

fabric

Body: 100% Micro polyester.
160 g/m² (8 oz/linear yd).

Mesh Panel: 100% Micro polyester
mesh. 150 g/m² (7.4 oz/linear yd).

pricing (cdn)

QTY	\$(A)
1-99	63.40
100-249	57.20
250-499	54.00
500+	50.60



CROSSOVER



EZ-CARE



WEBTECH 300



BREATHABLE



WICKING

If it's not in the catalogue, you don't have it.

FICTION

We love custom orders. Seriously, we'll do almost anything. Our Direct Source™ Program is a cost effective and highly targeted solution for companies on the quest for unique promotional apparel. You can do a simple change on an item from our existing line or our team will work closely with you, taking a vague idea and turning it into a completely unique product. You can choose colours, fabrics and features; then we'll make a sample for your approval. It's a little more work, but the results are worth it.



It's possible to place an order and receive it within days.

FACT

It's not only possible it's part of our commitment to outstanding customer service. Our policy is simple: "Out the door in 24." What that means is when you place an order it's guaranteed to ship from our building within 24 hours and, if we receive an order before 1 pm EST, the order will ship that same day (pending no backorders and account is in good standing or stock issues). Combine that with our ongoing effort to ensure stock levels are above 99% and yes, you can submit an order today and potentially be wearing it within days.



I'm limited when it comes to decorating options.

FICTION

We offer a variety of decorating options including the ever-popular embroidery, as well as others, such as heat sealing and embossing/debossing. Decorating is a relatively new and very exciting service from Trimark. To find out more contact your local sales representative or request our 'One Stop Shop - Embroidery Service' flyer. In addition, we'll put that logo anywhere you want it.



FACT
VS.
FICTION

Information is a powerful tool and here's your chance to find out more about how we work

Green clothing is something my company should consider.

FACT

As more and more people and organizations look for ways to reduce their carbon footprint, green gear is an increasingly popular option. Buying more eco-friendly clothing enables organizations to show key stakeholders how much they value the environment. Our Evolve™ products have eco-friendly characteristics and are part of our commitment to reducing the impact of our goods on the planet.



My budget is tight and I can't afford to invest in corporate apparel.

FICTION

We're always willing to work with you to find something that fits your budget. Our Opening Price Point Collection offers great value for money and we encourage you to ask our sales representatives about how you can leverage clearance pricing to fulfill your needs.



Placing an order online is fast and simple.

FACT

Ordering online translates into benefits across the board; namely when it comes to accuracy and speed. Order online and expect a more



LOOK OUT FOR A FRESH NEW WEBSITE FROM US IN FEB. 2010!

streamlined approach from start to finish. As an added bonus, you can place your order after hours or on the weekend.

125	White	Black
135	Stone	White
356	Red	Black
431	Olympic Blue	Black
575	Navy	White
651	Green Tea	White
995	Black	White

Three-button placket
(Men's Only)

new style

Contrast colour self fabric inner five-button placket



Contrast colour self fabric blocking on side panels

651

125

new style



mitica
Blocked short sleeve polo

Men's **16211**
Women's **96211**

sizes
Men's: S - 3XL
Women's: XS - 2XL

fabric
100% Micro polyester double pique with wicking finish. 145 g/m² (7 oz/linear yd).
100% Micro polyester flat knit collar.

pricing (cdn)

QTY	\$ (A)
1-99	32.40
100-249	29.20
250-499	27.60
500+	25.80



CROSSOVER



EZ-CARE



WEBTECH 100



BREATHABLE



WICKING

➤ Designed with contrast colour self fabric inner placket and blocking on side panels. Men's version features three-button placket. Women's version with five-button placket features shaped seams for flattering fit. V-notch side slits.



WEB
100

new style

mitica



WEBTech™ 100 Series

Incorporates some high-tech features for better performance attributes.

11 colours



Wicking finish

Long, slimming two-button placket (Women's Only)

Contrast 'X' shaped bartacks at slits

431

356

- 125 White
- 135 Stone
- 193 Mocha
- 262 Tangerine
- 326 Pink Zircon
- 356 Red
- 429 Chill
- 431 Olympic Blue
- 575 Navy
- 651 Green Tea
- 995 Black



moreno

Textured micro polo

Men's **16252**
 Women's **96252**
 Youth **56252**

sizes

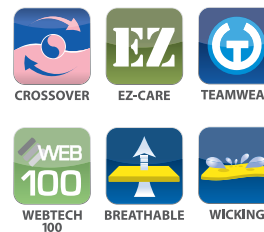
Men's: S – 3XL
 Women's: XS – 2XL
 Youth: JRS – JRXL

fabric

100% Micro polyester double pique. 145 g/m² (7 oz/linearyd).

pricing (cdn)

QTY	\$(A) Adult	\$(A) Youth
1-99	26.40	25.00
100-249	23.80	22.60
250-499	22.60	21.40
500+	21.00	20.00





Innovative WEBTech™ 100 wicking fabric offers breathable moisture management. Classic flat knit collar with long, slimming two-button placket (women's). Contrast 'X' shaped bartacks at slits and taping on inside of slits.



teamwear



moreno

- 125 White
- 146 Mushroom
- 356 Red
- 431 Olympic Blue
- 575 Navy
- 640 Forest Green
- 932 Heather Grey
- 995 Black



up to
5XL

**new
style**

575

V-notch side slits

146

new style



purcell
Short sleeve
polo

Men's **16213**
Women's **96213**

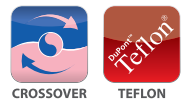
sizes
Men's: S - 5XL
Women's: XS - 3XL

fabric
60% cotton / 40% polyester pique with Teflon stain repellent finish. 210 g/m² (10 oz/linear yd).

60% cotton / 40% polyester flat knit collar.

pricing (cdn)

QTY	\$ (A)
1-99	33.80
100-249	30.60
250-499	28.80
500+	27.00



up to
5XL
UP TO 5XL



Men's version features three-button placket. Women's version with five-button placket features shaped seams for flattering fit. V-notch side slits.



new style



SPRING 2010 TREND REPORT: FUNCTIONAL FINISHES



Teflon® coating is a popular option that offers enhanced serviceability. It helps clothing look newer longer and repels stains because spills actually bead and roll off the fabric. It's also a particularly versatile feature because it doesn't change the look, feel or performance of a fabric—it works well with wools, cottons, microfibres, rayon and blends. The Purcell is an example of premium comfort and durability at work and play.

purcell

➤ This extremely comfortable golf shirt also comes with a great price. 11 great colours and a fantastic look gives this shirt so many options for today's needs.

Matching knit collar and cuffs

11 colours

up to 4XL

Three-button placket

369

Solid pique body

476

125



135



229



275



369



426



476



575



678



692



995



cotton pique golf shirt

Men's **16626**
Women's **96626**

sizes

Men's: S - 4XL
Women's: XS - 2XL

fabric

100% Cotton pique
bio-wash. 190 g/m²
(9.3 oz/linear yd)

pricing (cdn)

QTY	\$(A)
1-99	29.60
100-249	26.80
250-499	25.20
500+	23.60



CROSSOVER



BIO-WASH



UP TO 4XL

The enduring and endearing *Power of Gifting* with apparel

Money can't buy you love and it certainly can't buy you loyalty—at least not as part of a strong incentive and gift program. Countless studies show that while cash or gift cards are easy crowd pleasers, they have little trophy value.

In other words, cash, once regarded as the incentive king, doesn't have the same power to excite and motivate as a more tangible gift, such as apparel. In fact, it's been proven again and again that cash rewards are easily forgotten or tend to go towards more practical things, such as paying down debt, rather than buying the recipient a memorable item to represent their accomplishment or the generosity of your company. A marketing spend that's soon forgotten and does little to surprise and delight? Sounds like a waste of money.

...merchandise that one can see, touch, display or wear with pride makes a lasting impression.

On the other hand, merchandise that one can see, touch, display or wear with pride makes a lasting impression. And these days it's more important than ever to make a good impression. While many companies are still reeling from budget cuts and layoffs in the wake of the global economic crisis, all indicators are that this is a crucial time to invest in brands and gifts are a powerful tool in influencing human behaviour.

We're all conditioned from a young age to see gifts in a positive light—they tell the recipient

they're worthwhile and they rarely fail to make people smile and incite positive feelings. Countless studies have been done on how gifts affect human psychology and all indicate that gift giving is an important part of human interaction that helps define relationships and forge bonds.

On the employee front, gift programs are powerful motivators that can build unity across an organization. With many companies struggling to get their people back on track after a difficult period of layoffs and salary freezes, investing in gift merchandise illustrates

...79% of people leave their jobs due to lack of recognition.

to employees that you're committed to them in the long term. Also, as the economy heats up, you want to do everything you can to retain key talent. Society of Human Resources Management studies show that 79% of people leave their jobs due to lack of recognition—a little gift giving can go a long way in making employees feel valued.

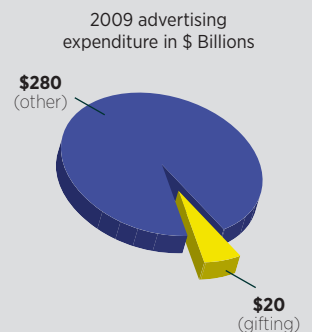
Giving gifts to clients and business partners sends a clear message that your company is healthy, while also keeping you top of mind (particularly if your competitors are going with the knee-jerk reaction and cutting back on gift spending).

Corporate gifting, be it for employees, clients or business partners, has long proven to be a valuable part of the marketing mix. Gifts are an effective tool for creating positive buzz and energy around your brand or company, while reinforcing the message that your business is strong. As a result, today, more than ever, is an ideal time for companies to invest in powerful incentive/reward/gift programs. **←**

GIFTING EXPENDITURE

With so much going for it, it is little wonder the act of gift giving plays an important role in the corporate world; however it's still not used to its full potential.

There's much talk about how advertising expenditure this year will be in the range of \$300 billion, but this figure, like most of those bandied about when it comes to advertising dollars, only represents a piece of the pie. Television, newspapers, magazine, outdoor, cinema, radio, direct, yellow pages and the Internet play into the equation, but gifting and the substantial role it plays is oddly overlooked.



In fact, gifting is a \$20 billion industry and research proves again and again it's an effective element of the marketing mix.

performance tees + layering

16365/96365 - P.26 ↙



↙ pricing levels

P1 pricing shown



Contrast collaret



Raglan sleeve top features WEBTech™ 300 wicking fabric for breathable moisture management. Seams highlighted with narrow, fashionable contrast coverstitch. Colour-block detail and contrast collaret. V-neck crew (women's).

V-neck crew
(Women's Only)

Wicking finish

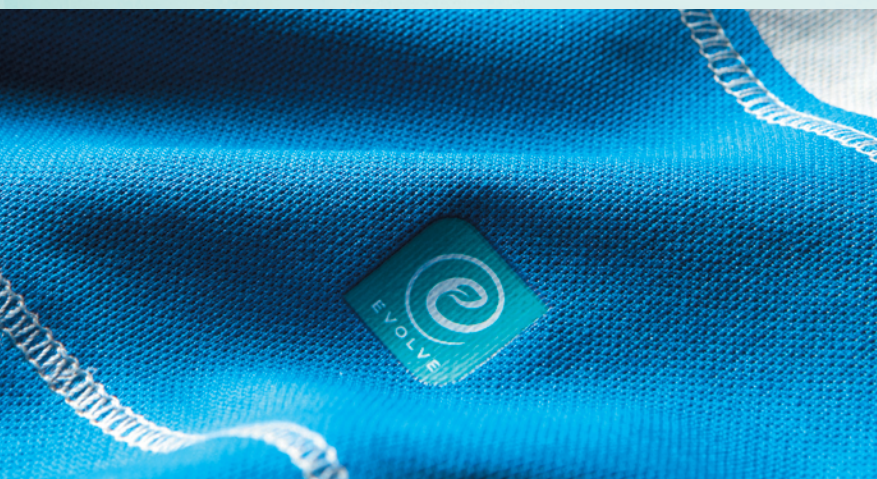
Seams highlighted with narrow,
fashionable contrast coverstitch

431

356



Grey Mist	Red	356
Grey Mist	Olympic Blue	431
Grey Mist	Navy	575
Charcoal	Grey Mist	925
Grey Mist	Black	995



356



431



575



925



995



pricing (cdn)

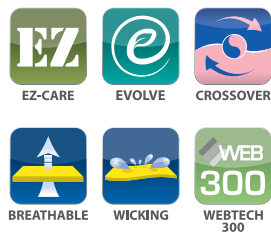
QTY	\$(A)
1-99	37.40
100-249	33.80
250-499	31.80
500+	29.80

sizes

Men's: S - 3XL
Women's: XS - 2XL

fabric

52% Micro polyester /
48% Recycled micro
polyester pique.
145 g/m² [7 oz/linear yd].



komati
Recycled
tech top

Men's **16374**
Women's **96374**

125

White

365

Sport Red

575

Navy

995

Black

1x1 rib collar & sleeve cuffs



Anti-Microbial

Anti-microbial treatments control the growth of odour-causing bacteria arising in everyday use of apparel & home textiles.

new style



365

125

new style

125



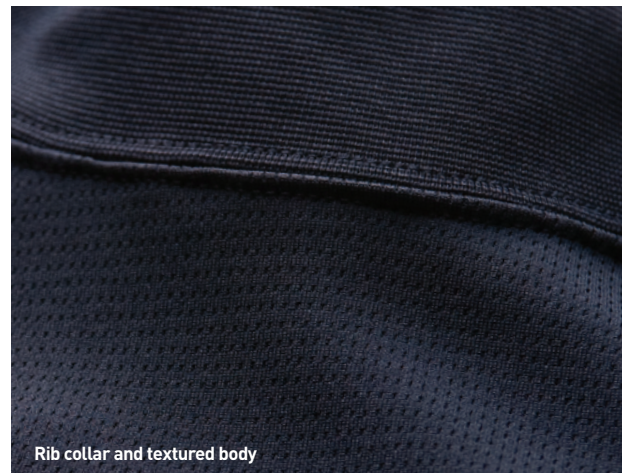
365



575



995



Rib collar and textured body

kemble

Long sleeve mock

Adult's
Youth

16210
56210

sizes

Adult's: XS - 3XL
Youth: JRS - JRXL

fabric

Body: 100% Micro polyester with wicking and anti-microbial properties. 175 g/m² (8.6 oz/linear yd).

Collar & sleeve cuffs: 96% Micro polyester / 4% Spandex with wicking.

pricing (cdn)

QTY	\$(A) Adult	\$(A) Youth
1-99	33.80	31.40
100-249	30.60	28.40
250-499	28.80	26.80
500+	27.00	25.00



EZ-CARE



TEAMWEAR



WEBTECH 100



BREATHABLE



WICKING



ANTI-MICROBIAL

↗ This style features 1x1 rib collar and sleeve cuffs.



new style

ægis

MICROBE SHIELD

The AEGIS Microbe Shield® is the revolutionary bonded antimicrobial technology:

- ✓ Provides protection against odour, staining, and deterioration caused by bacteria, fungus and other microorganisms.
- ✓ Permanently bonded antimicrobial barrier
- ✓ EPA and global registration

www.aegismicrobeshield.com

kemble

125

White Silver

358

Team Red Black

575

Navy White

995

Black White

Wicking finish



Wicking

Product wicks moisture away from your body.



Mesh side panel

575



Contrast cover seams

358



WEBTech™ 300 fabrication and wicking finish enhances moisture management. Mesh side panel with contrasting cover seams for added detail. Non-chaffing heat transfer label.



tenor

crew pique with colour block inset

Men's **16365**
Women's **96365**

sizes

Men's: S - 3XL
Women's: XS - 2XL

fabric

100% Micro polyester.
160 g/m² (7.9 oz/linear yd).

pricing (cdn)

QTY	\$(A)
1-99	37.40
100-249	33.80
250-499	31.80
500+	29.80



CROSSOVER



EZ-CARE



UV PROTECTED



SCOTCHGARD



WEBTECH 300



BREATHABLE



WICKING

novelty fleece

SPRING 2010 TREND REPORT: HYBRID FABRICS

Think of it as the best of both worlds: Combining two kinds of fibres to create one fabric. In other words, this season expect multifunctional garments without a lot of bulk. Hybrid fabric construction increases mobility where it's needed the most without compromising stylish fit. Waterproof, breathable, movable fabrics translate in comfortable performance clothing that people want to wear.



18114/98114 - P.32 ↙

pricing levels ↙

P1 pricing shown

18102 | 98102
P.30 \$53.60



18149 | 98149
P.31 \$49.80



Good (\$55 & Under)

18207 | 58207
P.28 \$57.40/\$54.80



Better (\$55 - \$60)

18114 | 98114
P.32 \$87.40



717010 | 797010
P.33 \$82.40



Best (\$80 & Up)

125

White

365

Sport Red

547

Royal Blue

575

Navy

991

Grey Storm

995

Black

up to
5XL

new
style

Three piece hood

Contrast colour self
fabric lined hood

547
(back view)

365

Self fabric sleeve cuffs & hem

new style

125



365



547



575



991



995



Front underarm with
metal grommets



pasco
Tech
hoody

Adult's
Youth

18207
58207

sizes

Adult's: XS - 5XL
Youth: JRS - JRXL

fabric

100% Polyester jersey with
brushed back. 215 g/m²
(10.6 oz/linear yd).

pricing (cdn)

QTY	\$ (A) Adult	\$ (A) Youth
1-99	57.40	54.80
100-249	51.80	49.40
250-499	48.80	46.60
500+	45.80	43.80



up to
5XL
UP TO 5XL



ELEVATE
SPORT



Features self fabric sleeve cuffs and hem. Contrast colour self fabric lined hood. Drawstring with metal tip. Front pouch pocket. Front underarm with metal grommets.



teamwear

new style

pasco

- 127 Winter White
- 275 Spark
- 330 Carnation
- 369 Vintage Red
- 476 Bay Blue
- 575 Navy
- 590 Purple
- 657 Citron Green
- 660 Dark Citron Green
- 995 Black

10 colours

Anti-pill fleece

Contrast colour grosgrain ribbon at neck

476

330



Full Zip Microfleece Jacket that is warm and cozy with detailed cover stitching. A clean, classic look. Anti-pilling fleece, drawcord waist, zip pockets, and contrasting neck taping. Great insulation, breathability and perfect for everyday use.

Drawcord and toggle at waist



full zip microfleece jacket

Men's **18102**
Women's **98102**

sizes
Men's: XS - 3XL
Women's: XS - 2XL

fabric
100% Polyester anti-pill microfleece, 250 g/m² (7.4 oz).

pricing (cdn)

QTY	\$ (A)
1-99	53.60
100-249	48.40
250-499	45.60
500+	42.80





Features center front exposed reverse-coil zipper with easy-grip pull and chin guard, plus lower exposed reverse-coil zippered pockets with easy-grip pull. Interior rubberized audio exit port with cord guide. Adjustable drawcord & toggle at hem. Women's version features shaped seams for a more flattering fit.

Center front exposed reverse coil zipper with easy-grip pull & chin guard

Colour contrast on front and back

678



recycled

369
(back view)

Winter White	127
Charcoal	
Vintage Red	369
Black	
Royal Blue	547
Black	
Navy	575
Navy	
Charcoal	678
Fern	
Black	995
Black	



Interior rubberized audio exit port with cord guide



pricing (cdn)

QTY	\$ (A)
1-99	49.80
100-249	45.00
250-499	42.40
500+	39.80

sizes

Men's: S - 3XL
Women's: XS - 2XL

fabric

100% Recycled polyester
two sides brushed fleece
with anti-pill finish.
190 g/m² [9.3 oz/linear yd].

volcan
Recycled fleece
jacket

Men's **18149**
Women's **98149**

Center front exposed reverse-coil zipper with easy-grip pull. Lower hidden zippered pockets with easy-grip pull. Women's version features shaped seams for a more flattering fit.

369	Vintage Red	Black	Light Charcoal
486	Pacific	Olympic Blue	White
547	Royal Blue	Navy	White
655	Juniper	Light Charcoal	White
995	Black	Light Charcoal	White



369
(back view)

547



Bonded

Two fabrics laminated into one, creating a synergistic fabric that has the properties of both.

Center front exposed reverse coil zipper with easy-grip pull

Lower hidden zippered pockets with easy-grip pull



polaris
Knit jacket

Men's **18114**
Women's **98114**

sizes

Men's: S - 3XL
Women's: XS - 2XL

fabric

100% Polyester bonded to 100% Polyester microfleece. 290 g/m² (14.3 oz/linear yd).

pricing (cdn)

QTY	\$ (A)
1-99	87.40
100-249	78.80
250-499	74.40
500+	69.80





995

Lower exposed reverse coil zippered pockets with auto lock pulls (Men's Only)



Center front exposed reverse-coil zipper with easy-grip pull. Contrast colour piping at raglan armhole. Men's version features lower exposed reverse-coil zippered pockets with auto lock pulls. Women's version features lower invisible zippered pockets and shaped seams for a more flattering fit.



Contrast colour piping at raglan armhole

429

Platinum	White	125
Platinum	Chill	429
Platinum	Olympic Blue	431
Platinum	Navy	575
Platinum	Black	995



125



429

(Women's Only)



431

(Men's Only)



575



995



pricing (cdn)

QTY	\$ (A)
1-99	82.40
100-249	74.20
250-499	70.20
500+	65.80

sizes

Men's: S - 3XL
Women's: XS - 2XL

fabric

Body: 100% Polyester brushed back warp knit. 250 g/m² (12.3 oz/linear yd).

Body hem & sleeve cuffs (men's only): 90% Polyester / 10% Spandex 2x2 rib.

electra

Full zip jacket

Men's **717010**
Women's **797010**

outerwear

↗ 12928/92928 - P.38

↘ SPRING 2010 TREND REPORT: LAYERED DRESSING

System dressing is the new generation of the layering concept. Garments are engineered to interact together to achieve optimal comfort and performance levels. The Jozani (page 36) and the Blyton (page 38) are examples of this new generation of layered dressing where garments are designed fit over and under each other for maximum performance, as well as comfort and aesthetics. The interacting layering pieces can work as a monochrome or can be contrasted to create a visual story as unique as your company signature.

↘ pricing levels

P1 pricing shown

712000 | 792000
P.35 \$137.40/\$149.80



12928 | 92928
P.38 \$94.80



12927 | 92927
P.36 \$87.40



12929 | 92929
P.40 \$37.40



12349 | 52349
P.42 \$67.00/\$64.40



12602 | 52602
P.44 \$57.60/\$56.40



12398 | 52398
P.45 \$44.80/\$42.40



12312 | 52312
P.65 \$63.60/\$59.60



12322 | 52322
P.65 \$47.00/\$44.40



Good (\$90 & Under)

Better (\$90 & Up)



Center front, lower and right chest pockets feature reverse-coil zippers with easy-grip pulls. Center back slit offers ease of movement. Women's longer-length version features attached hood and shaped seams for a more flattering fit.

Right chest exposed reverse coil zippered pocket with easy-grip pull

Center back slit for ease of movement



575

151

Attached hood & longer length (Women's Only)



Stretch

Fabric content provides mechanical stretch allowing for a more comfortable fit.



151



575



995



WATER REPELLENT



SMART 300



CROSSOVER



STRETCH



BONDED



WIND RESISTANT

pricing (cdn)

QTY	\$(A) Men's	\$(A) Women's
1-99	137.40	149.80
100-249	123.80	135.00
250-499	116.80	127.40
500+	109.80	119.80

sizes

Men's: S - 3XL
Women's: XS - 2XL

fabric

Shell: 95% Polyester / 5% Spandex with water repellent finish on the surface bonded to 100% Polyester microfleece. Total weight 290 g/m² (14.3 oz/linear yd).

lynx
Softshell
jacket

Men's **712000**
Women's **792000**

ELEVATE



System Ready

Garments are engineered to interact together to achieve optimal comfort and performance levels.

new style

125	White	Grey Storm	Steel Grey
369	Vintage Red	Grey Storm	Steel Grey
486	Pacific Blue	Grey Storm	Steel Grey
575	Navy	Grey Storm	Steel Grey
995	Black	Grey Storm	Steel Grey

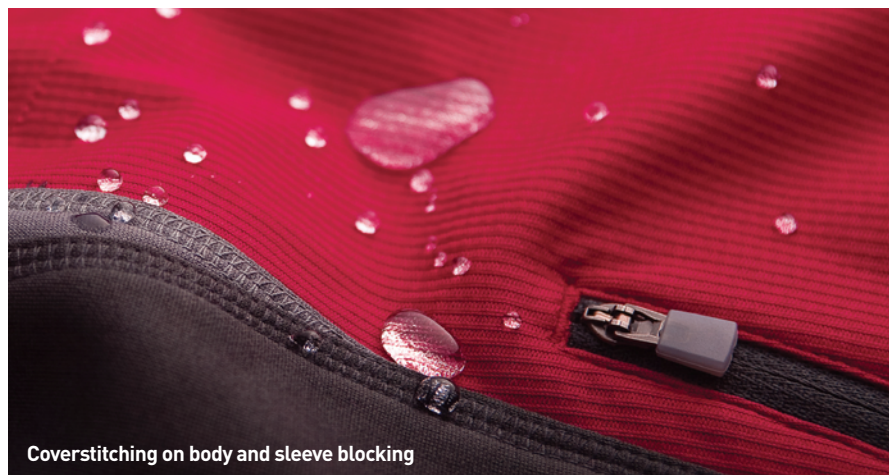


Contrast colour collar detail

Sleeves with thumb exit

Chest & lower front pockets with exposed reverse coil zippers with autolock zipper pull

new style



Coverstitching on body and sleeve blocking

jozani
Hybrid softshell jacket

Men's **12927**
Women's **92927**

sizes

Men's: S - 3XL
Women's: XS - 2XL

fabric

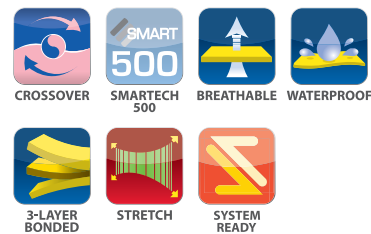
Body: 100% Polyester textured knit bonded to 100% Polyester textured knit with waterproof / breathable membrane.

Three layer construction, total weight 210 g/m² (10.3 oz/linear yd).

Blocking: 100% Polyester pique fleece with brushed back 192 g/m² (9.3 oz/linear yd).

pricing (cdn)

QTY	\$(A)
1-99	87.40
100-249	78.80
250-499	74.40
500+	69.80





Hybrid system-ready base layer jacket features system loops on exterior of back, neck & exterior sleeves. Designed for pairing with Blyton Lightweight Jacket (12928/92928).



ELEVATE
SPORT



**3-layer
bonded**

new style

**SPRING 2010
TREND REPORT:
EASE OF MOVEMENT**

Whether for work or play there's a shift towards apparel with high-tech fabrics that shape elbows, knees and other key mobility areas. If it's comfort you're after, forget bulky over-sized gear. A strong focus on ease of movement makes work and life easier with more streamlined garments that move with you.

jozani

OUTERWEAR

270

Saffron
Steel Grey

369

Vintage Red
Steel Grey

575

Navy
Steel Grey

945

Steel Grey
Black

995

Black
Steel Grey

new style

Roll away hood

Critical seam sealed on neck, raglan sleeves and hood

Articulated sleeves with silver reflective welded tape



575



270

new style

270



369



575



945



995



System Ready

The **Jozani** (p. 36) and the **Blyton** are designed and engineered to interact with each other.



blyton
Lightweight jacket

Men's **12928**
Women's **92928**

sizes

Men's: S - 3XL
Women's: XS - 2XL

fabric

Body: 100% Micro polyester dobby with waterproof / breathable membrane.

Lining: 100% Polyester mesh lined body & hood / 100% Polyester taffeta lined sleeves.

pricing (cdn)

QTY	\$(A)
1-99	94.80
100-249	85.40
250-499	80.60
500+	75.80



CROSSOVER



EMBROIDERY ACCESS



SMART 500



BREATHABLE



WATERPROOF



WIND RESISTANT



ROLL-AWAY HOOD



SEAM SEALED



SYSTEM READY



Hybrid system-ready jacket features system loop snaps on interior centre back, neck & interior sleeves. Designed for pairing with Jozani Hybrid Softshell Jacket (12927/92927). Critical seam sealed on neck, raglan sleeves and hood. Articulated sleeves with silver reflective welded tape. Roll away hood.



ELEVATE
SPORT



**seam
sealed**

**new
style**

**SPRING 2010 TREND REPORT:
SEAMS GET REFLECTIVE**

Performance features, such as taped seams, are moving into the spotlight and making their mark as technical design features. Wearing your performance features on the outside so that the wearer can be protected on the inside is the new style button pushing the performance style parameters. For example, the Blyton's taped elbow articulation not only protects the garment from distortion and the wearer from intrusive moisture, but when that outer taping is reflective it doubles as a safety feature.

blyton

369	Vintage Red	Gummetal
476	Bay Blue	Gummetal
575	Navy	Gummetal
678	Fern	Gummetal
995	Black	Gummetal



SMARTech™ 300 Series

Highly technical product including bonded fabrics and finishing treatments.



new style

Centre front contrast exposed reverse coil zipper with easy grip logo zipper pull

575

Lower front zippered pockets

678

new style



Back vent with mesh lining



grinnell
Lightweight jacket

Men's **12929**
Women's **92929**

sizes

Men's: S - 5XL
Women's: XS - 3XL

fabric

100% Polyester 240T.
100% Polyester flat back mesh side panels & inner collar.
100% Polyester mesh lined back vent.

pricing (cdn)

QTY	\$ (A)
1-99	37.40
100-249	33.80
250-499	31.80
500+	29.80



CROSSOVER



SMARTech 300



UP TO 5XL



WIND RESISTANT



WATER REPELLENT

grinnell



↗ Engineered with lower front zippered pockets and adjustable drawcord & toggle at hem. Centre front contrast exposed reverse coil zipper with easy grip logo zipper pull. Back vent with mesh lining. Full elasticized cuffs.



**water
repellent**

new style

358	Team Red	Titanium	Charcoal	White
403	Navy	Team Red	Charcoal	White
575	Navy	Titanium	Charcoal	White
904	Black	Team Red	Charcoal	White
995	Black	Titanium	Charcoal	White

Contrast cut-and-sewn detail on body and sleeves

Smart-looking contrast cut-and-sewn detail on body and sleeves and stitching detail on collar and front pockets. Diminishing piping detail along raglan sleeves with full elasticized cuffs. Contrast adjustable drawcord and toggle at hem. Mesh detail on underarm. Embroidery access zipper. Chest pocket.



Diminishing piping detail along raglan sleeves

Full elasticized cuffs

 **men's & youth**



norwood
Hybrid track jacket

Adult's **12349**
Youth **52349**

sizes
Adult's: S - 3XL
Youth: JRS - JRXL

fabric
100% Polyester 240T. PA coating, water repellent.
Body lining:
100% Polyester mesh.
Sleeve lining:
100% Polyester taffeta.
Mesh insert:
100% Polyester mesh.

pricing (cdn)

QTY	\$(A) Adult	\$(A) Youth
1-99	67.00	64.40
100-249	60.40	58.00
250-499	57.00	54.80
500+	53.60	51.40



TEAMWEAR



EMBROIDERY ACCESS



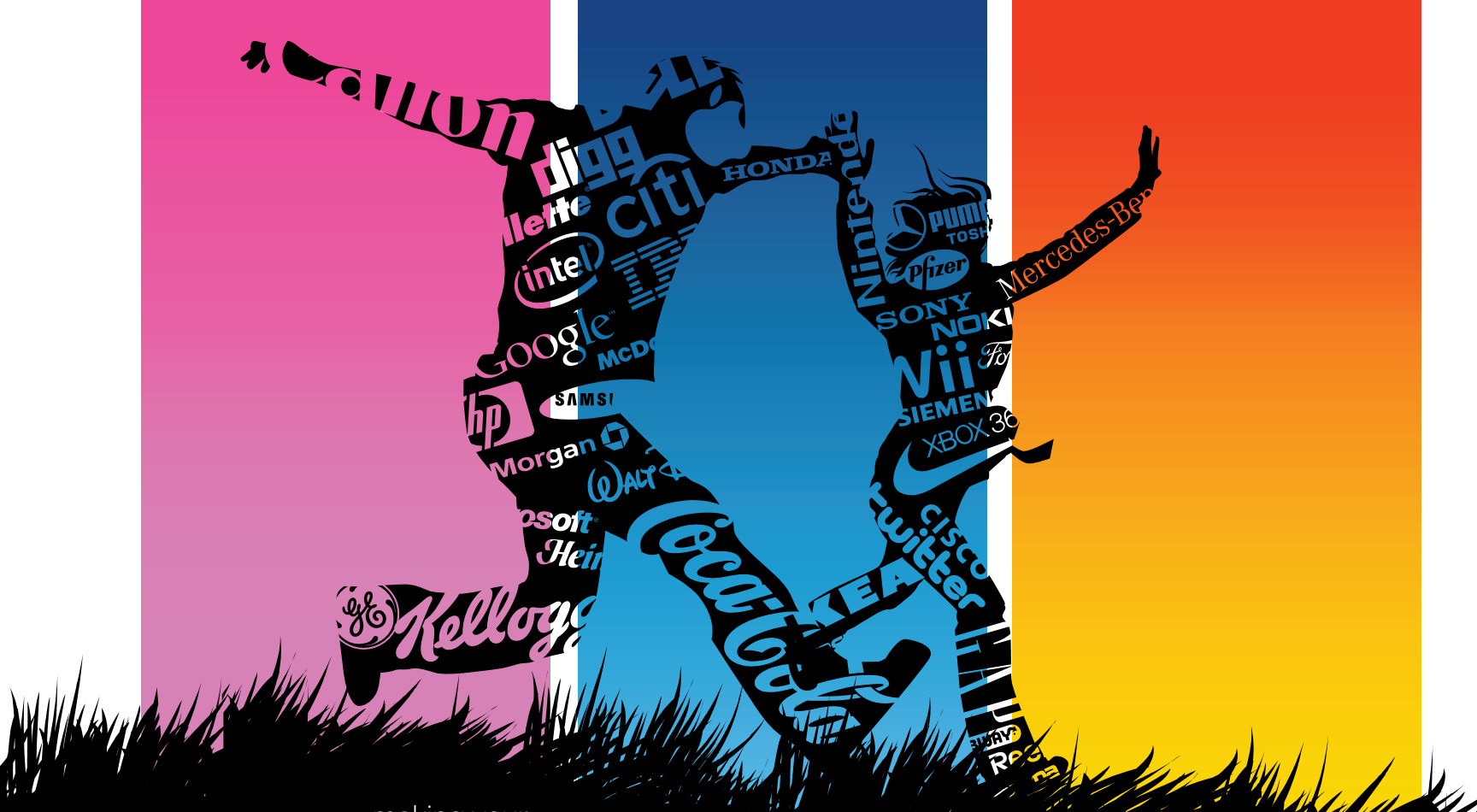
SMART 300



WIND RESISTANT



WATER REPELLENT



making your

BRANDPOP

Brands, when marketed to their full potential, not only build loyalty to a company or product, they can also change every-day vernacular, inspire shifts in style or spark movements.

For marketers, hitting the right note means understanding what a brand represents and taking that message to the masses. One communication vehicle that has proven to hold strong emotional appeal is clothing. The evidence is everywhere: one need only look around to understand how choosing the right promotional apparel helps turn brand followers into brand ambassadors and, thereby, pop-culture influencers.

When Molson introduced its “I am Canadian” slogan in 1994 it was a relative hit. The beer company used the slogan until 1998 and it appeared on its fair share of t-shirts, worn mostly by the kind of people who wear beer paraphernalia. When the brewing giant revived the slogan in 2000, it took it to new heights on the back of the now iconic “The Rant,” an ad where average Joe Canadian expounds what it is and is not to be Canadian. The ad hit all the right

notes, becoming an instant pop-culture phenomenon, reigniting latent Canadian nationalism and prompting people from all walks to take pride in donning the “I am Canadian” slogan on everything from stylized t-shirts to sweatshirts and hats. The right promotional clothing played a huge part in helping Molson extend its brand because it allowed people with a variety of styles and

“When someone chooses to wear a t-shirt or baseball cap emblazoned with a brand logo or slogan, they’re making a statement.”

tastes to tap into the movement and show their affinity with the brand.

You know a brand has transcended itself to play a larger role and function in society when people are willing make it personal—and there’s nothing more personal than expressing yourself with clothing. When someone chooses to wear a t-shirt or baseball cap emblazoned with a brand logo or slogan, they’re making a statement. When a person wears a “Think Different” t-shirt, for instance, it says something their attitudes

towards creativity and innovation. Apple reinforces this by choosing gear appealing to its target audience—it’s a calculated effort to make sure that the clothing or accessories meant to reflect its brand are actually an extension of brand values in terms of quality, style and relevance. It’s no accident that Apple’s promotional material is often considered ‘collectible.’

Promotional clothing done right is powerful. When people donned a “Chose Change” t-shirt during the U.S. presidential race, they became part of a movement. When we chose an

“I am Canadian” t-shirt, we’re expressing our pride. When an urban hipster sports a vintage “Coke is it” t-shirt, it speaks volumes about their sense of style and place in society.

One benchmark of a truly successful brand is telling a story that becomes part of larger culture and apparel plays an essential role in the process. Branded clothing gives people the means by which to express their affinity with not only the brand itself, but also the values it represents. Think of it as wearing your heart on your sleeve, or, in most cases, emblazoned across your chest. **◀**

358	Team Red	White
547	Royal Blue	White
575	Navy	White
640	Forest Green	White
990	Charcoal	White
995	Black	White



Comfortable and stylish for all your coaching needs. Jacket features lower front zippered pockets and adjustable drawcord & toggle at hem. Centre front hidden coil zipper with easy grip logo zipper pull. With half elastic cuff with adjustable cuff tabs and contrast piping detail.

Contrast piping detail

new colour

Center front hidden coil zipper with easy grip logo zipper pull

Half elastic cuff with adjustable cuff tabs



men's & youth



mesh lined coaches jacket

Adult's 12602
Youth 52602

sizes

Adult's: XS - 3XL
Youth: JRS - JRL

fabric

Body: 100% Nylon 210T.

Lining: 100% Polyester mesh lined body / 100% Polyester taffeta lined sleeves.

pricing (cdn)

QTY	\$(A) Adult	\$(A) Youth
1-99	57.60	56.40
100-249	52.00	50.80
250-499	49.00	48.00
500+	46.00	45.00



TEAMWEAR



EMBROIDERY ACCESS



SMART 300



WIND RESISTANT



WATER RESISTANT


575	heavy
White	White
995	Black
White	White

 **men's & youth**

Back right pocket with velcro closure

Full elasticized waist with interior drawstring

new style

 Pants with piping detail feature full elasticized waist with interior drawstring and front zippered pockets. Back right pocket with velcro closure. Men's version features 12" leg zippers. Youth's version features 10" leg zippers.

new style



Front hidden zippered pockets



SMART 300
SMARTECH 300

TEAMWEAR

WATER RESISTANT

WIND RESISTANT

pricing (cdn)

QTY	\$(A) Adult	\$(A) Youth
1-99	44.80	42.40
100-249	40.40	38.20
250-499	38.20	36.20
500+	35.80	33.80

sizes

Adult's: XS - 3XL
Youth: JRS - JRXL

fabric

Body: 100% Nylon 210T.

Lining: 100% Polyester mesh lined body / 100% Polyester taffeta lined lower leg.

mesh lined track pant

Adult's	12398
Youth	52398

403	Navy	Team Red	White
404	Navy	Silver	White
901	Black	Charcoal	White
902	Black	Forest Green	White
904	Black	Team Red	White
906	Black	Royal Blue	White
910	Black	Gold	White



Center front hidden coil zipper with easy grip logo zipper pull

new colour

Lower front zippered pockets

Adjustable drawcord & toggle at hem

Jacket features centre front hidden coil zipper with easy grip logo zipper pull. Adjustable drawcord & toggle at hem. Lower front zippered pockets. Half elastic cuff with adjustable cuff tabs.



twill track jacket

Adult's **12312**
Youth **52312**

sizes

Adult's: XS - 3XL
Youth: JRS - JRL

fabric

Body: 100% Polyester twill.

Underarm blocking: 100% Polyester mesh.


Lining: 100% Polyester mesh lined body / 100% Polyester taffeta lined sleeves.

pricing (cdn)

QTY	\$ (A) Adult	\$ (A) Youth
1-99	63.60	59.60
100-249	57.40	53.80
250-499	54.20	50.80
500+	50.80	47.60



		404
White	Silver	Heavy
White	Charcoal	901
		Black

 Extremely breathable while remaining water and wind resistant. This track pants includes articulated knee for a great fit.



Two front zippered pockets

SMART
300

Mesh inserts behind knee area for increased breathability

5" Zippered gusset

 **men's & youth**



Articulated knee & mesh inserts



404

901

 BREATHABLE	 SMART 300 SMARTECH 300	 TEAMWEAR
 WATER RESISTANT	 WIND RESISTANT	

pricing (cdn)

QTY	\$ (A) Adult	\$ (A) Youth
1-99	47.00	44.40
100-249	42.40	40.00
250-499	40.00	37.80
500+	37.60	35.40

sizes

Adult's: XS – 3XL
Youth: JRS – JRL

fabric

100% Polyester twill.

Behind knee blocking:
100% Polyester mesh.

twill track pants

Adult's **12322**
Youth **52322**

Direct Source™

Create original styles and excite your team.

Need something special?

The Direct Source™ Program has you covered.

Why go custom..?

originality

Create something special; an original unique style that represents you, your team and your brand. The Direct Source™ Program gives you the freedom and flexibility to get exactly what you want, on time – at the right price... no compromises!

Branded garments are powerful marketing tools. From corporate uniforms to event marketing and private label – our team will assist you through every step of the way to help you extend your brand.

Design your garment exactly to your needs – in a custom PMS colour, adding pockets and labels – in keeping with the look and feel of your brand and all within the budget.

Decorating – when you decorate your garment during manufacturing, you'll save money, plus you'll also have many more decorating options available.

Packaging – why not add hangtags, boxes and tissue to complete your order?

Tell us what you have in mind... **anything is possible.**



Why use us..?

reliability

With over 30 years experience in overseas manufacturing and relationships with the best factories, we pride ourselves at getting you the right product, on time – at the right price.

As a market leader in developing innovative new products, you can be assured our experienced and expert design team will design unique exciting styles – exclusively for you.

- ✓ Save money on high volume orders from existing catalogue styles or add new style or functionality.
- ✓ Full marketing support and presentation materials to close the sale.
- ✓ Speed. Same day quote response.
- ✓ Avoid stress and relax. Our quality control team will ensure it is exactly what you need and ordered.

STEP 1 THE VISION imagine+design

It might be easier to start by selecting a similar style from our tried and true library of styles, and save time – or you could start from scratch and work with our design team to create exactly what you want.



STEP 2 THE PROCESS develop

Contact your sales representative to start the process. We can customize anything and everything on your garment, colour, labels, trimmings and sizes. Select from our library or create your own. You will need to gather some key information – size ratio, quantity, delivery time. Once the design is finalized, we'll take care of everything for you.



STEP 3 THE DETAILS build

Due to the complexity of all the options, it is difficult to provide exact timelines. For example, styles that can be made domestically can be as fast as 45 days. And slight alterations to our existing styles can be approximately 100 days. Some brand new designs can take as long as 150 days to be manufactured and delivered.



Perfect!

Decorating one-stop-shop

makin' it
easy
for you

Why use the one-stop-shop?

We are a one-stop-shop with no fuss, no hassle for quality decorating. Our customer service desk can help you to digitize your logo, and help you with your Embroidery, Embossing & Debossing, Heat Seal Transfers and Silk Screening requirements.

With our many years of experience and expertise in the industry, we will make it easy and hassle free for you.



How is embroidery key for customers?

Embroidery is a classic time-honoured method of embellishing garments with an authentic high quality representation of your logo..

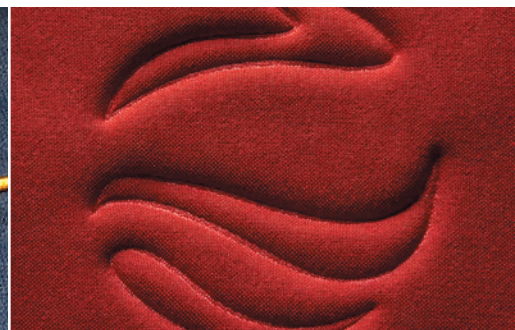
Over thousands of years, embroidery techniques have been refined from the traditional hand stitched art form to the high tech, high speed computerised machines of today, offering complex designs with hundreds of custom colour choices.

Today's embroidery machines can turn almost any image into a high quality embroidered logo, that is wear and tear proof, and will survive almost any wash & wear regimen. It is far and away our most popular decorating option, and over 90% of our decorated garments are embroidered.

With over 300 thread colours - including specialty threads - in stock and full time experienced operators, we can complete any order in any timeline.

Want to differentiate your logo even more?

If you're looking to differentiate yourself from embroidery, or if you have a water proof garment and wish to retain the integrity of the fabric, it might be preferable to use non-penetrating methods such as **Heat Sealing, Embossing** or **Debossing** - all of which we offer in our **One-Stop-Shop**.



For more details please speak to your Promotional Product Distributor or visit our website www.trimarksportswear.com/decorating to see samples and learn about other decorating options.

Swatches & sewout samples: complimentary free digital image. A minimum of 12 units per logo colourway applies. Minimum of 72 units. Allow 3-7 business days after all logo approvals. No rush charges. Please note: Trimark does not sell direct.

sizing chart

We encourage the use of sizing samples to have a more accurate sizing for our styles. To that end we offer samples at a reduced price. There is no extra charge on the larger sizes for in-stock items.

tops & jackets

Men's	XS	S	M	L	XL	2XL	3XL	4XL
to fit neck	13-13.5	14-14.5	15-15.5	16-16.5	17-17.5	17.5-18	18.5-19	19.5-20
to fit chest	33-35	36-38	39-41	42-44	45-48	49-52	53-56	57-60
to fit sleeve length	32	33-33.5	34-34.5	35-35.5	36-36.5	37-37.5	38-38.5	38.5-39

Women's sizing	XS	S	M	L	XL	2XL
	2-4	6-8	10-12	14-16	18	20
to fit chest	30-32	33-35	36-38	39-41	42-44	45-47
to fit sleeve length	29.5-30	30-30.5	31-31.5	32-32.5	32.5-33	33-33.5

Youth sizing	JRS	JRM	JRL	JRXL
	8-10	10-12	12-14	14-16
to fit chest	28-29	30-31	32-33	34-35
to fit sleeve length	26-26.5	27-27.5	28-28.5	29-29.5

Everything you need to know about

Trimark Sportswear

is a mouse-click away
www.trimarksportswear.com

bottoms

Men's sizing	XS	S	M	L	XL	2XL	3XL	4XL	44	46	48	50	52
to fit waist	28-29	30-31	32-33	34-35	36-37	38-39	40-41	42-43	44-45	46-47	48-49	50-51	51-52
to fit hip	34-36	36-38	38-40	40-42	42-44	44-46	46-48	48-50	50-52	52-54	54-56	56-58	58-60
inseam (H) [†]	30.75	31	31.25	31.5	31.75	32	32.25	32.5					
inseam (UH) ^{**}	36	36	36	36	36	36	36	36	36	36	36	36	36

Women's sizing	24	26	28	30	32	34	36	38	40	42
	2	4-6	8-10	12	14	16	18	20	22+	24+
to fit waist	24-26	26-28	28-30	30-32	32-34	34-36	36-38	38-40	40-42	42-44
to fit hip	34-35	36-37	38-39	40-41	42-43	44-45	46-47	48-49	50-51	52-53
inseam (UH) ^{**}	34	34	34	34	34	34	34	34	34	34

Youth sizing	JRS	JRM	JRL	JRXL
	8-10	10-12	12-14	14-16
to fit waist	24-26	26-28	28-30	30-32
to fit hip	28-30	30-32	32-34	34-36
inseam (H) [†]	24	26	28	30

[†]H = Hemmed ^{**}UH = Unhemmed

* JRS: Junior Small JRM: Junior Medium JRL: Junior Large JRXL: Junior Extra Large

measurements

(All Men's, Women's and Youth sizing in inches)

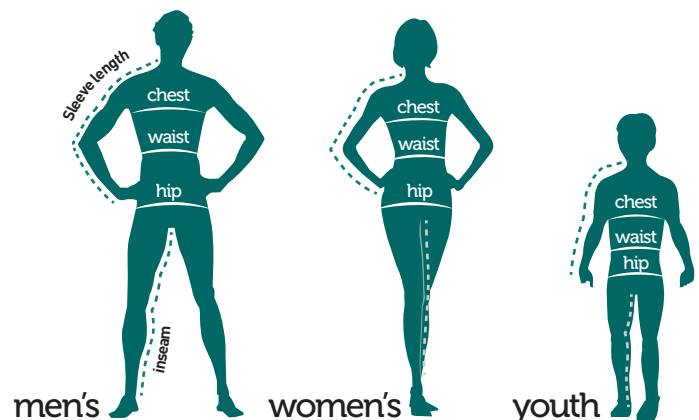
Fit Chest - Under the arms and across the shoulder blades with a firm and level tape.

Hip - When standing, measure around the widest part of the hip.

Sleeve length - Relax arm, and measure from the centre of the back of the neck, over the shoulder and down to the outer wrist.

Waist - Measure around your natural waistline, while in your underwear. Keep one finger between the tape and your body for an accurate fit.

Inseam - Select a pair of your best-fitting pants of a similar material. Measure from the crotch to the bottom. The number of inches, to the nearest half-inch, is the inseam length.



style number index

G

golf shirts

STYLE #	PAGE #
O 12312	46
O 12349	42
O 12398 (new)	45
O 12602	44
O 12927 (new)	36
O 12928 (new)	38
O 12929 (new)	40
T 16210 (new)	24
G 16211 (new)	14
G 16213 (new)	18
G 16252	16
G 16339	8
T 16365	26

T

performance tees

STYLE #	PAGE #
T 16374	23
G 16384	12
G 16399	9
G 16505 (new)	10
G 16626	20
F 18102	30
F 18114	32
F 18149	31
F 18207 (new)	28
O 52312	46
O 52349	42
O 52398 (new)	45
O 52602	44

FL

novelty fleece

STYLE #	PAGE #
T 56210 (new)	24
G 56252	16
F 58207 (new)	28
O 92927 (new)	36
O 92928 (new)	38
O 92929 (new)	40
G 96211 (new)	14
G 96213 (new)	18
G 96252	16
G 96339	8
T 96365	26
T 96374	23
G 96384	12

O

outerwear

STYLE #	PAGE #
G 96399	9
G 96505 (new)	10
G 96626	20
F 98102	30
F 98114	32
F 98149	31
O 712000	35
G 716000	6
F 717010	33
O 792000	35
G 796000	6
F 797010	33

NEW COLOUR PALETTES

We have added **2 brand new colours** to our ever growing colour spectrum.



mushroom
146



gunmetal
984

ICON INDEX



This is a new style offered this year.



Product is treated to resist staining.



The fabric is treated to prevent pilling.



Product available up to size 5XL.



This product available in men's and women's.



Inside zipper for easy hideaway decorating.



Two fabrics laminated into one, creating a synergistic fabric that has the properties of both.



Product available up to size 4XL.



Evolve is our commitment to reducing the environmental impact on our planet.



Garment allows moisture to escape from the body.



Three fabrics laminated into one, creating a synergistic fabric that has the properties of all three.



Ear 'buds' access port.



Made in Canada!



Fabric treated to repel water.



A treatment to soften the fabric.



Incorporates some high-tech features for better performance attributes.



In the washer, in the dryer, on your back virtually wrinkle free.



Fabric treated to resist water.



A treatment that softens the fabric and eliminates fine threads to create a smoother, richer pique.



High-tech yarns wick, evaporate and breathe for enhanced moisture management.



Ideal for team uniforms.



Garment is treated with waterproof coating and is fully seam sealed.



The hood rolls up into itself.



Wicks, evaporates, breathes: all 300 Series features with more advanced style and fit features.



Functional enough for industrial wear.



Product wicks moisture away from your body.



The hood for this product can be taken off.



Wicks, evaporates, breathes: all 500 Series features with more advanced yarns and anti-bacterial qualities.



A process that makes the garment soft and comfortable while keeping you cool and dry.



Product helps prevent wind from penetrating.



Fabric content provides mechanical stretch allowing for a more comfortable fit.



Highly technical product including bonded fabrics and finishing treatments.



Some protection from UV Rays.



Product keeps wind from penetrating.



Garments are engineered to interact together to achieve optimal comfort and performance levels.



Highly technical product: all 300 Series features, including biochemical technology, waterproof and stain repellency.



Product is treated to resist staining.



Anti-microbial treatments control the growth of odour-causing bacteria arising in everyday use of apparel & home textiles.



Seams are sealed to make product waterproof.



Highly technical product: all 500 Series features, including thermal insulation, wind resistance and seam sealing.

35TH YEAR OF BEING
THE NUMBER

ONE

CHOICE FOR LOGO APPAREL **IN CANADA**

FOLLOW US



TWITTER



FACEBOOK



LINKEDIN

www.trimarkswear.com

TRIMARK
SPORTSWEAR GROUP
WWW.TRIMARKSPORTSWEAR.COM


BRANDS THAT FIT.™

ASI
MEMBER

92122


PPPC
Member

960921