

SPRING '10 VALUE COLLECTION

Great apparel. Great prices!

88
STYLES
WITH PLENTY OF STOCK!

TRIMARK
SPORTSWEAR GROUP

UP TO **78%** OFF
SELECTED ITEMS!

Welcome to the latest edition of the

Outfitting your team **ON A BUDGET?**

Look no further... Our **Business Basics Collection** is designed to "Make it Easy for You™", with apparel that fits your style, fits your needs and fits your budget...

Look out for the **Business Basics** icon throughout the pages of this catalogue and get the **best possible value!**



No minimums...
and lots of stock!



Look out for the **Full Stock** icon throughout the catalogue.



TRIMARK
price
a\$urance

Get our lowest price
15 days before and 15 days after
a sale period.

✓ **Lowest Price Assured!**

decorating one-stop-shop

Why use the one-stop-shop?

We are a one-stop-shop with no fuss, no hassle for quality decorating. We can help you to digitize your logo, and help you with your Embroidery, Embossing & Debossing, Heat Seal Transfers and Silk Screening requirements.

With our many years of experience and expertise in the industry, **we will make it easy and hassle free for you.**



Over 90% of our customers use embroidery, why?

Embroidery is a classic time-honoured method of embellishing garments with an authentic high quality representation of your logo.

Over thousands of years, embroidery techniques have been refined from the traditional hand stitched art form to the high tech, high speed computerised machines of today, offering complex designs with hundreds of custom colour choices.

Today's embroidery machines can turn almost any image into a high quality embroidered logo, that is wear and tear proof, and will survive almost any wash & wear regimen. It is far and away our most popular decorating option, and over 90% of our decorated garments are embroidered.

With over 300 thread colours – including specialty threads – in stock and full time experienced operators, we can complete any order in any timeline.

For more details please speak to your Promotional Product Distributor or visit our website www.trimarksportswear.com/decorating to see samples and learn about other decorating options.

Swatches & sewout samples: complimentary free digital image. A minimum of 12 units per logo colourway applies. Minimum of 72 units. Allow 3-7 business days after all logo approvals. No rush charges. Please note: Trimark Sportswear Group sells exclusively through a dedicated network of Promotional Products Distributors, Marketing Agencies and Specialty Advertising Agencies.

Trimark Spring Value Collection.

This new collection includes high value, low cost favorites, that get to the heart of your customers need for value.*

*while supplies last

To make this the most effective sales tool you'll use this season, keep these key points in mind as you browse:

1

All stock is "while supplies last", and all inventory levels are available online at www.trimarkswear.com – just type the style number in the search field and you'll be able to see realtime in-stock data – instantaneously!

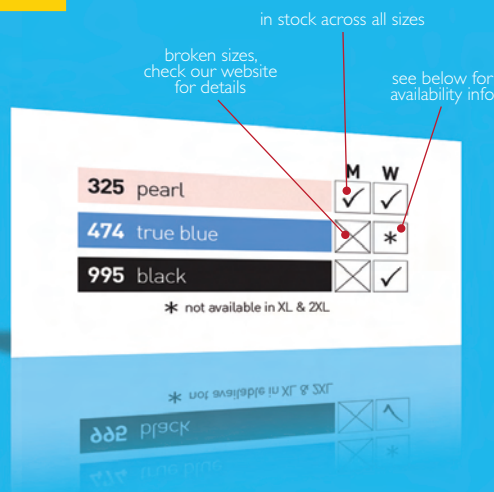
makin' it
easy
for you



Simulated image, may not be exactly as shown.

2

Look for the stock level information boxes, here you'll be able to see "at a glance" the colours and sizes these styles are available in, across our men's, women's & youth. Here's how it works:



in stock across all sizes

broken sizes, check our website for details

see below for availability info

Now through to August 2010, get savings of



on a selection of seasonally appropriate styles, you can start buying with confidence and SAVE!

Looking for something you just can't find?



Please feel free to call your local **Promotional Product Distributor Sales Representative.**

Note: Trimark Sportswear Group sells exclusively through a dedicated network of Promotional Products Distributors, Marketing Agencies and Specialty Advertising Agencies.

For all your Trimark needs, please visit us at www.trimarkswear.com

product by price

eqp pricing shown

The place for quality golf shirts
and performance tees

under \$20



from
\$16.00

16268 | 96268 • **P.6**



from
\$17.80

16503 | 96503 • **P.10**



from
\$15.00

16625 | 96625 • **P.17**



from
\$10.00

17805 • **P.19**

\$20 - \$25



from
\$20.00

17867 | 97867 • **P.3**



from
\$20.00

16435 | 96435 • **P.5**



from
\$20.00

16329 | 96329 • **P.8**



from
\$20.00

16502 | 96502 • **P.9**



from
\$20.00

16501 | 96501 • **P.11**



from
\$20.00

16792 | 96792 • **P.12**



from
\$20.00

16330 | 96300 • **P.14**



from
\$20.00

16379 | 96379 • **P.15**



from
\$20.00

16716 • **P.16**



from
\$20.00

17803 | 97803 • **P.18**



from
\$20.00

717003 | 797003 • **P.20**



from
\$22.00

717002 | 797002 • **P.21**

over \$25



from
\$30.00

16472 | 96472 • **P.4**



from
\$28.80

16369 | 96369 • **P.7**



from
\$30.00

16328 | 96328 • **P.13**



from
\$27.80

16601 • **P.17**

Find our extensive polo shirt & performance tee collections online @

WWW.TRIMARKSPORTSWEAR.COM

starting from
\$20.00

193

**SMART,
 QUICK
 AND EASY**

Comfortable rib-knit mock neck
 and cuff. Set-in sleeves.

(M) **17867** (W) **97867**

**Velocity – short sleeve mock
 neck jersey**

100% Double mercerized cotton.
 Fine knit mock neck. Set in sleeves.

Men's S – 3XL

Women's XS – 2XL

Price by Quantity

1-99 \$25.00

100-249 \$22.60

250-499 \$21.40

500+ \$20.00

(A)



	M	W
125 white	<input checked="" type="checkbox"/>	<input checked="" type="checkbox"/>
145 sand	<input checked="" type="checkbox"/>	<input checked="" type="checkbox"/>
193 mocha	<input checked="" type="checkbox"/>	<input checked="" type="checkbox"/>
575 navy	<input checked="" type="checkbox"/>	<input checked="" type="checkbox"/>
995 black	<input checked="" type="checkbox"/>	<input checked="" type="checkbox"/>

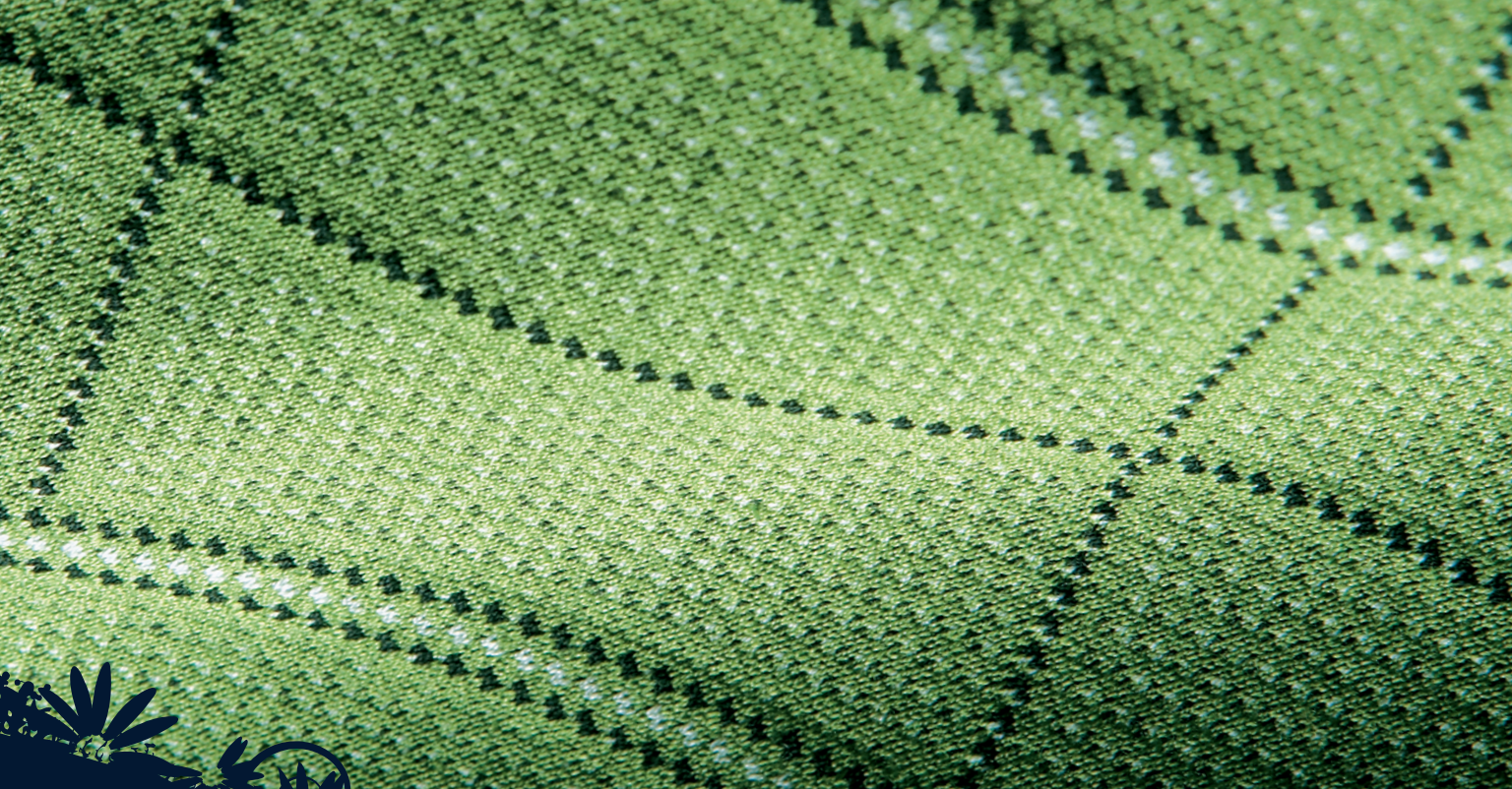


Double Mercerized

A process to add lustre, strength,
 stability and affinity for dyes.



145



The cornerstone of a wardrobe that's **professional and affordable.**

(M) **16472** (W) **96472**

Axis – diamond jaquard jersey polo

100% Double mercerized cotton. Hemmed solid sleeves. Solid back. Flat knit collar. Three-button placket. Johnny collar (women's).

Men's S – 3XL

Women's XS – 2XL

Price by Quantity

1-99 \$37.60

100-249 \$34.00

250-499 \$32.00

500+ \$30.00

(A)



M W

575 navy

658 willow green

995 black

* not available in L



Axis from
\$30.00



575



660



BASKET WEAVE:

KEEP THEM COOL AND DRY
WELL INTO THE NEW YEAR.

Blended wrinkle resistant fabric, with a rich textured and embossed collar.
Contrasting piping down the side panels and a three-button placket.

(M) 16435 (W) 96435

Basket weave golf shirt

65% Polyester / 35% Cotton. Basket weave knit.
WEBTech™ collar technology-open weave knit on
neck area. Women's True Fit™. EZ-Care™ fabric.

Men's S - 3XL

Women's S - 2XL

Price by Quantity

1-99 \$25.00

100-249 \$22.60

250-499 \$21.40

500+ \$20.00

(A)



	M	W
125 white / black	*	*
290 sienna / black	*	X
369 vintage red / charcoal	†	✓
508 creek / charcoal	✓	✓
575 navy / charcoal	✓	X
660 dk.citron green / black	X	*
995 black / charcoal	✓	†

* not available in S
† not available in M



369



508

290

575

660

125

369

995

MY NAME IS HANK!

WITH THE HANK PIQUE POLO
YOU CAN CREATE A UNIFORM
THAT WORKS!



(M) 16268 (W) 96268

Hank – pique polo

100% Bio-wash cotton. Chest and back contrast piping. Three-button placket with set in sleeves (men's). Johnny collar with chest and back contrast piping (women's). Contrast inner placket and tape (men's). Side slits (men's). Half inch side slits (women's). Heat-transfer label.

Men's S – 3XL

Women's XS – 2XL

Price by Quantity

1-99 \$20.00

100-249 \$18.00

250-499 \$17.00

500+ \$16.00

(A)



	M	W
125 white / black	<input checked="" type="checkbox"/>	<input checked="" type="checkbox"/>
144 matchstick / black	<input checked="" type="checkbox"/>	<input checked="" type="checkbox"/>
193 mocha / white	<input checked="" type="checkbox"/>	<input checked="" type="checkbox"/>
369 vintage red / black	<input checked="" type="checkbox"/>	<input checked="" type="checkbox"/>
575 navy / white	<input checked="" type="checkbox"/>	<input type="checkbox"/>
995 black / white	<input checked="" type="checkbox"/>	<input checked="" type="checkbox"/>

* not available in XL



369



Pique polo starting
from \$16

Hank from
\$16.00



Even our basics are better because **quality is our leading edge.**

(M) 16369 (W) 96369

Radar – pique polo with contrast mesh insert

100% Micro fibre polyester. WEBTech™ 300 fabrication. Flat knit collar. Contrast mesh panel inset. Contrast placket lining and neck tape. Three-button front placket. Wicking finish. Engraved logo buttons. Heat transfer label.

Men's S – 3XL
Women's XS – 2XL

Price by Quantity
1-99 \$36.00
100-249 \$32.40
250-499 \$30.60
500+ \$28.80



	M	W
125 white / navy	<input checked="" type="checkbox"/>	<input checked="" type="checkbox"/>
193 mocha / matchstick	<input checked="" type="checkbox"/>	<input checked="" type="checkbox"/>
545 empire blue / charcoal	<input checked="" type="checkbox"/>	<input checked="" type="checkbox"/>
575 navy / charcoal	<input checked="" type="checkbox"/>	<input checked="" type="checkbox"/>
995 black / vintage red	<input checked="" type="checkbox"/>	<input checked="" type="checkbox"/>





995

(M)16329 (W)96329

Zip mock neck

Front mock neck with zip (men's). Side mock neck with zip (women's). Mock neck with zip. Contrasting performance inserts. Enhanced moisture management and soil resistance with 3M Scotchgard™.

Men's S – 3XL
 Women's XS – 2XL

Price by Quantity
 1-99 \$25.00
 100-249 \$22.60
 250-499 \$21.40
 500+ \$20.00
 (A)



	M	W
125 white / silver	*	X
290 sienna / charcoal	X	✓
572 nautical blue / silver	✓	✓
995 black / charcoal	†	X

* not available in S, 2XL, 3XL
 † not available in XL, 2XL

GREAT VALUE
 IN PRICE & FEATURES.

This garment is constructed using micro fine polyester fibres to channel wetness away from the skin and keep you comfortable.

zip mock from
\$20.00





Let our popular polo make you the most popular gift giver.

(M) 16502 (W) 96502

Jersey spandex colour-blocked polo

92% Polyester / 8% Spandex jersey WEBTech™ 500 Series. Two-button hidden placket (men's). Zip-front placket (women's). Contrast under placket (men's). Stretch for extra comfort. Heat-transfer label. Fibres wick moisture and help regulate body temperature. Enhanced moisture management and stain release properties by 3M Scotchgard™.

Men's S – 3XL

Women's XS – 2XL

Price by Quantity

1-99 \$25.00
 100-249 \$22.60
 250-499 \$21.40
 500+ \$20.00



(A)

	M	W
261 sunburst / winter wht	*	†
385 wine / winter wht	*	†
575 navy / charcoal	*	†
990 charcoal / winter wht	*	✓
995 black / charcoal	X	†

* not available in M, L
 † not available in S



polo from
\$20.00

385



UV Protected
 Some protection from UV Rays.

(M) 16503 (W) 96503

Jersey spandex colour-blocked mock

92% Polyester / 8% Spandex Jersey WEBTech™ 500 Series. Contrast shoulder panel. Self fabric collar. Stretch for extra comfort. Contrast under sleeve and side panel. Heat-transfer label. Fibres wick moisture and help regulate body temperature. Enhanced moisture management and stain release properties by 3M Scotchgard™.

Men's S - 3XL
Women's XS - 2XL

Price by Quantity

1-99 \$22.40
100-249 \$22.20
250-499 \$19.20
500+ \$17.80
(A)



	M	W
551 deep sea / winter white	<input checked="" type="checkbox"/>	<input checked="" type="checkbox"/>
678 fern / winter white	<input checked="" type="checkbox"/>	<input checked="" type="checkbox"/>
995 black / winter white	<input checked="" type="checkbox"/>	<input checked="" type="checkbox"/>



SPANDEX:

EASY DOES IT!

Sleek and streamlined by design, this ONTOUR™ ultra soft-touch jersey is engineered with spandex stretch to hug your body like a glove.

jersey spandex from

\$17.80



polo from
\$20.00

144

428



Create an effortless casual look with better polos.



(M) **16501** (W) **96501**

Jersey spandex polo

Two-button hidden placket (men's). Slim placket (women's). Euro-fit (men's). 1 1/2" hem bottom with slits. Fibres wick moisture and help regulate body temperature. Enhanced moisture management and stain release properties by 3M Scotchgard™.

Men's S – 3XL

Women's XS – 2XL

Price by Quantity

1-99 \$25.00

100-249 \$22.60

250-499 \$21.40

500+ \$20.00



(A)

	M	W
127 winter white	*	✓
144 matchstick	†	∞
428 winston blue	#	β
575 navy	✗	✓
995 black	✗	✓

* not available in L
 † not available in M, L
 # not available in M
 ∞ not available in XL
 β not available in S

125



369



Always on point – and on budget.

(M) 16792 (W) 96792

1/4 Zip golf shirt

100% Microfibre polyester WEBTech™ 700 Series. Solid body. Raglan sleeve. Contrast piping at front zip and sleeve hem. Collar features contrast outline design. Intarsia knit collar with open weave at neck. Hollow fibres wick moisture and regulate body temperature. High IQ® technology for anti-bacteria properties and soil resistance enhancement.

Men's S – 3XL

Women's XS – 2XL

Price by Quantity

1-99 \$25.00

100-249 \$22.60

250-499 \$21.40

500+ \$20.00

(A)



	M	W
127 winter white / silver	✓	✓
369 vintage red / charcoal	*	†
478 reflection / charcoal	X	#
575 navy / silver	X	✓
995 black / charcoal	X	✓

* not available in S, M

† not available in S

not available in XS, S



golf shirt from
\$20.00



Wicking

Product wicks moisture away from your body.

Carlton from
\$30.00



656

(M) 16328 (W) 96328

Carlton two-tone pique polo

100% Micro polyester. WEBTech™ 300 fabrication. Self fabric collar. Two-button front placket. Contrast mesh insert at underarm. Wicking finish. Heat transfer label.

Men's S - 3XL
 Women's XS - 2XL

Price by Quantity

1-99 \$37.60
 100-249 \$34.00
 250-499 \$32.00
 500+ \$30.00
 (A)



	M	W
236 amber	✓	✓
430 azure	✗	✓
656 green haze	*	†
985 slate	✓	✓



* not available in M
 † not available in XL

NO HAZARDS HERE! A perfect pitch and AN AMAZING PRICE.



430



WEBTech™ goes to work when the heat is on. **Wicks moisture and offers sun protection too.**



261

UP TO
52%
OFF



678

575

551

(M) **16330** (W) **96330**

Pique striped polo

55% Cotton / 45% Polyester WEBTech™ 300 Series. Fibres wick moisture and help regulate body temperature. Enhanced moisture management and stain release properties by 3M Scotchgard™. Three-button placket (men's). Three-button slim placket (women's). Hemmed sleeve. Non-curl collar. Heat-transfer label.

Men's S – 3XL

Women's XS – 2XL

Price by Quantity

1-99 \$25.00

100-249 \$22.60

250-499 \$21.40

500+ \$20.00

(A)



	M	W
261 sunburst	✓	✗
551 deep sea	*	†
575 navy	*	✓
678 fern	*	#
995 black	✗	✓

* not available in M
† not available in S, L
not available in L



Pique striped polo
starting from \$20

(M) 16379 (W) 96379

Textured ottoman polo

100% Polyester WEBTech™ 300 Series. Hemmed sleeve. Heat-transfer label. Two-button placket (men's). One-button placket (women's). Mesh inset at underarm. Textured ottoman blocked with pinhole mesh.

Men's S - 3XL
Women's XS - 2XL

Price by Quantity

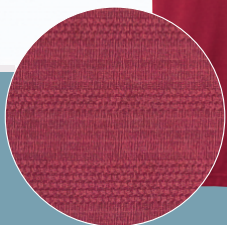
1-99 \$25.00
100-249 \$22.60
250-499 \$21.40
500+ \$20.00

(A)

	M	W
390 chili	*	✓
575 navy	X	†
584 grape	✓	✓
678 fern	X	†
995 black	X	✓

* not available in M
† not available in S

Textured ottoman
from
\$20.00



At last, a polo that always
looks neat & smooth.
**This WEBTech™ 300 Series fights
stains, wrinkles & fading.**

BIG SAVINGS

with odour-halting finish and sun protection.

A.(M) 16716

Short sleeve mock neck

100% Microfibre Polyester WEBTech™ 700 Series. Special treatment for soil resistance. Contoured lycra blend rib at neck and cuff. Keeps wearer cool and comfortable by wicking moisture. UV protection UPF 25+. High IQ® technology for anti-bacteria properties and soil resistance enhancement.

Men's XS – 3XL

Price by Quantity

1-99	\$25.00
100-249	\$22.60
250-499	\$21.40
500+	\$20.00



- 135 stone
- 476 bay blue

* not available in M



EZ-Care™

In the washer; in the dryer; on your back virtually wrinkle free.



476

mock neck from
\$20.00

B.(M) 16625 (W)96625

Desert sands golf shirt

100% Combed cotton pique. Cotton pique knit. Three-button placket. Ribbed collar and cuffs

Men's S - 4XL

Women's S - XL

Price by Quantity

1-99 \$18.80
 100-249 \$17.00
 250-499 \$16.00
 500+ \$15.00



	M	W
125 white	*	✓
135 stone	✓	✓
234 yellow	✓	†
275 spark	✓	✗
356 red	✗	✓
423 cool blue	✓	∞
505 french blue	#	✗
575 navy	†	✓
627 sage	✗	✓
995 black	✗	✓

* not available in S, M
 † not available in M
 # not available in M, XL
 ∞ not available in L



Just try to find **more feature packed polo's** for the price

C.(M) 16601

Woodcreek polo shirt

50% Cotton pique / 50% Polyester. Pique knit. Knit collar. EZ-Care™ fabric. Made in Canada.

Men's S - 3XL

Price by Quantity

1-99 \$34.80
 100-249 \$31.40
 250-499 \$29.60
 500+ \$27.80



	M
125 white	✓
130 natural	✓
137 natural/black	✓
575 navy	✓
627 sage	✓
995 black	*

* not available in M



Made in Canada

(M) 17803 (W) 97803

Bonded full zip with contrast microfleece

100% Polyester: Functional and stylish this WEBTech™ piece works great as part of a layering system or on it's own.

Men's S - 3XL
Women's XS - 2XL

Price by Quantity

1-99 \$25.00
100-249 \$22.60
250-499 \$21.40
500+ \$20.00



390

995

	M	W
390 chili	<input checked="" type="checkbox"/>	<input checked="" type="checkbox"/>
575 navy	<input type="checkbox"/>	<input checked="" type="checkbox"/>
995 black	<input type="checkbox"/>	<input type="checkbox"/>

* not available in S
† not available in M, L

WEIGHTLESS WARMTH



MADE TO LAYER

FOR COOL MORNINGS OR EVENINGS.



WEBTech™ 300 Series

High-tech yarns wick, evaporate and breathe for enhanced moisture management.



GET THAT
**ATHLETIC,
 TEAM** INSPIRED
 LOOK.



(A) **17805**
WEBTech™ 300 series
textured long-sleeve tee

100% Polyester. WEBTech™ moisture management fabrication. Stain release properties. Self collar. 3M Scotchgard™. 3D textured fabrication. Coverstitch detailing. Straight hem finish. Double needle stitching on cuff. Spandex blend cuff insert for fit and comfort at wrist.

Adult's S – 3XL

Price by Quantity

1-99	\$12.60
100-249	\$11.40
250-499	\$10.80
500+	\$10.00



(A)

ADULT

369 vintage red	*
992 graphite	*

* not available in M



(M) 717003 (W) 797003

Hydrus short sleeve tee

100% Polyester. Double striping detail down the shoulder and sleeve. Fibres that wick moisture away and regulate body temperature. Women's style has cap sleeve & fitted cut. Reflective Elevate icon on sleeve.

Men's S – 3XL

Women's XS – 2XL

Price by Quantity

1-99 \$25.00

100-249 \$22.60

250-499 \$21.40

500+ \$20.00

(A)

	M	W
125 white	✓	#
370 varsity red	*	∞
575 navy	✓	X
995 black	†	β

* not available in M
† not available in S
not available in L, XL, 2XL
∞ not available in 2XL
β not available in XL, 2XL



MORE THAN A TEE,
IT'S A **SUPER-T.**



Breathable

Garment allows moisture to escape from the body.

125



370



575



995



(M) 717002 (W) 797002

Lacerta long sleeve tee

100% Polyester. Double striping detail down the shoulder and sleeve. Fibres that wick moisture away and regulate body temperature. Reflective Elevate icon on sleeve and 1x1 ribbing at cuff. Women's style has a fitted cut.

Men's S - 3XL
Men's XS - 2XL

Price by Quantity

1-99 \$27.60
100-249 \$25.00
250-499 \$23.60
500+ \$22.00

	M	W
125 white	*	✓
370 varsity red	†	#
575 navy	†	✗
995 black	✓	✗

* not available in M
† not available in 2XL
not available in XS, XL, 2XL



Wicking

Product wicks moisture away from your body.



**MORE
SUPER-T
TO LOVE!**

product by price
eqp pricing shown

The place for quality woven shirts

under \$23



from
\$22.20

17301 | 97301 • P.23



from
\$15.40

17736 • P.25



from
\$20.00

17460 | 97460 • P.25

over \$23



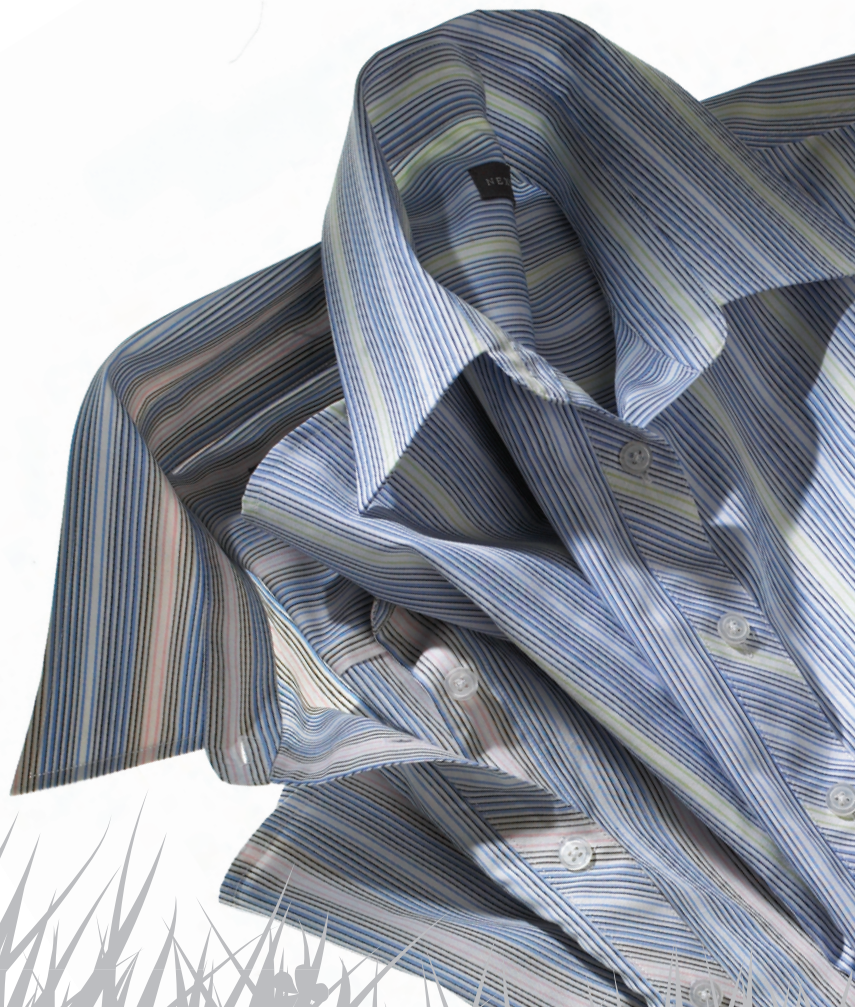
from
\$30.00

97302 • P.24



from
\$24.40

17303 | 97303 • P.24



Find our extensive woven shirt collection online @
WWW.TRIMARKSPORTSWEAR.COM

(M)17301 (W)97301

Supersoft cotton dress shirt

100% Supersoft combed cotton. Pre-washed and wrinkle resistant. Chest pocket with pen slot (men's). Women's True Fit™

Men's S - 3XL

Women's XS - 3XL

Price by Quantity

1-99 \$27.80

100-249 \$25.20

250-499 \$23.80

500+ \$22.20



(A)

	M	W
325 pearl	*	✓
474 true blue	X	#
995 black	X	*

* not available in XS
† not available in M, L
not available in XL, 2XL



Wrinkle free

Products resists wrinkling.



Our finest cotton,
at our finest value.

starting from
\$22.20



A.(M) 17303 (W)97303

Pinstripe dress shirt

100% Cotton. Long sleeve dress shirt. Yarn dyed with multi-coloured stripe. Invisible button down collar (men's). Chest pocket (men's). Box pleat at back yoke (men's). Front and back vertical waist darts (women's). Women's True Fit™ (women's). Free point collar (women's).

Men's S - 3XL

Women's XS - 2XL

Price by Quantity

1-99 \$30.60
 100-249 \$27.60
 250-499 \$26.20
 500+ \$24.40



	M	W
104 white / citron green	<input checked="" type="checkbox"/>	<input checked="" type="checkbox"/>
108 white / pink	<input checked="" type="checkbox"/>	<input checked="" type="checkbox"/>



Turn everyday
INTO INTERESTING.

B.(W)97302

Fine cotton dress shirt

100% Fine cotton. Pre-washed for softness. Wrinkle resistant fibre treatment. French rolled front placket. Dyed-to-match buttons. Box pleat at center back

Women's S - XL

Price by Quantity

1-99 \$37.60
 100-249 \$34.00
 250-499 \$32.00
 500+ \$30.00



	W
330 carnation	<input checked="" type="checkbox"/>



D

330





C

C.(M) 17736

Men's twill shirt

65% Polyester / 35% Cotton. 7 oz. EZ-Care™ fabrication. Epaulettes for attaching cell phone, badges etc. Two chest pockets with button down flaps to secure belongings. Pen slot on pocket flap for easy access. I.D. badge placement above left pocket. Double needle stitching helps reinforce seams. Double pleated two-button adjustable cuff. Tail hem.

Men's S – 4XL

Price by Quantity

1-99 \$19.40
 100-249 \$17.60
 250-499 \$16.60
 500+ \$15.40



(A)

	M
125 white	*
427 light blue	✓
580 dark navy	*
995 black	*

* not available in M

A lightweight and durable finished look that's perfect all year long.

DENIM DEFINES
CASUAL!

D.(M) 17460 (W) 97460

Light denim shirt

100% Cotton denim. 7½ oz cotton denim. Horn-tone buttons. Single pocket with pen slot (men's). Button down collar (men's). Preshrunk. Lightweight and durable fabric.

Men's S – 3XL

Women's S – XL

Price by Quantity

1-99 \$25.00
 100-249 \$22.60
 250-499 \$21.70
 500+ \$20.00



(A)

	M	W
427 light blue	✓	✓



Enzyme wash

A treatment to soften the fabric.

D



19814
 Melton jacket

Pg 42.

under \$30



12205 · P27



12208 · P28



18106 | 98106 · P32



18593 | 98593 · P34



18201 · P35



12901 | 92901 · P37



717001 | 797001 · P41



12311 | 52311 · P43



12321 | 92321 · P43

\$30 - \$35



18105 | 98105 · P31



18134 | 98134 · P33



18346 · P35



98246 · P35



18547 | 98547 · P36



18592 | 98592 · P36



92102 · P38

over \$35



12778 | 92778 · P29



12903 | 92903 · P30



19502 · P39



718000 | 798000 · P40



19814 | 99814 · P42

Find our extensive outerwear collection online @
WWW.TRIMARKSPORTSWEAR.COM

(M) I2205

Lined windshirt with stripes

100% Micro polyester; 600mm clear coating – Lining: 100% Nylon. Embroidery access zipper at inner back near bottom hem. Unlined sleeves for easy movement. Durable with generous sizing. Lined Body.

Men's XS – 3XL

Price by Quantity

1-99 \$25.00
100-249 \$22.30
250-499 \$21.40
500+ \$20.00



(A)

	M
275 spark	*
476 bay blue	†
995 black	#

* not available in XL
† not available in 2XL
not available in M, XL

275



TIP: IF IT'S WINDY, KEEP YOUR SHOTS LOW AND WEAR **WIND RESISTANT** GEAR.

starting from
\$20.00



275



476



995

(M) 12208

2-in-1 windshirt

70% Cotton / 30% Nylon with 600mm PU coating. Hemmed bottom with bungee cord, toggles and cord keepers. Transparent front zipper with concealed sleeve zippers. Adjustable cuffs for better fit, partially elasticized. Long sleeves easily convert to short sleeves. Fabric has excellent water resistance and windproof properties.

Men's S - 3XL

Price by Quantity

1-99 \$32.60

100-249 \$29.40

250-499 \$27.80

500+ \$26.00

(A)



995

	M
135 stone	*
575 navy	†
995 black	✓

* not available in XL, 2XL, 3XL

† not available in XL, 2XL

THE ULTIMATE
**PULL ON
& PLAY**
GOLF PULLOVER.



(M) 12778 (W) 92778

Dryden – Fully lined spring jacket

100% Polyester with clear PU coating.
Lining: 100% Polyester. Insert: 92% Polyester / 8% Spandex bonded with micro fleece.
Fully lined body and sleeves. Mesh insert detail for increased breathability. Contrast poly spandex insert on sleeve's elbow, back collar and back raglan.

Men's S – 3XL

Women's XS – 2XL

Price by Quantity

1-99 \$52.60

100-249 \$47.40

250-499 \$44.80

500+ \$42.00

(A)



369	vintage red	<input checked="" type="checkbox"/>	<input checked="" type="checkbox"/>
575	navy	<input checked="" type="checkbox"/>	<input checked="" type="checkbox"/>
995	black	<input checked="" type="checkbox"/>	<input checked="" type="checkbox"/>



Dryden from
\$42.00

369



575



(M) 12903 (W) 92903

Classic jacket

100% Polyester. Micro polyester twill. Back vent.
Two zippered pockets. Hidden snap cuff. Self-piping
seam. Draw cord hem (men's).

Men's S - 3XL

Women's XS - 2XL

Price by Quantity

1-99 \$50.00

100-249 \$45.00

250-499 \$42.60

500+ \$40.00



(A)

	M	W
135 stone	✓	✗
428 winston blue	✗	✓
575 navy	*	✓
995 black	†	†

* not available in L
† not available in L, XL



starting from
\$40.00

135



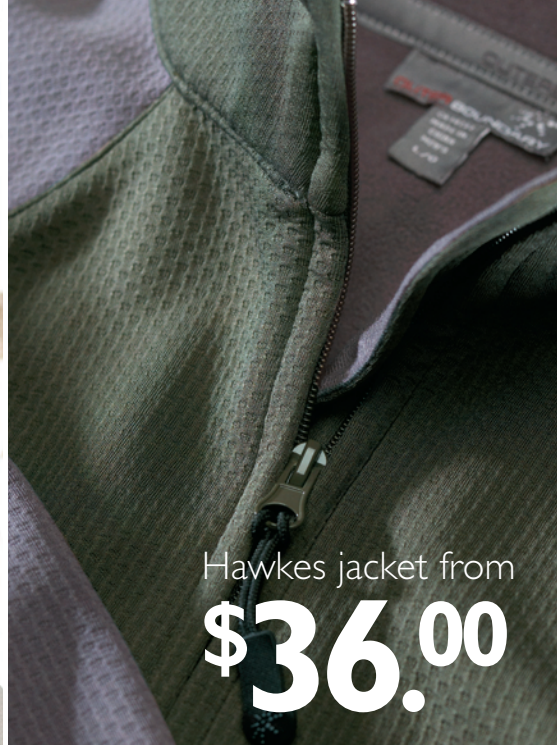
428

SPORT or CLASSIC.



689

127



Hawkes jacket from
\$36.00

(M) **18105** (W) **98105**

Hawkes moto mesh bonded fleece jacket

100% Polyester. SMARTech™ 300 fabrication. Moto mesh bonded with anti-pill microfleece. Contrast sleeve panel. Full zip with hood (women's). Full zip (men's). Two slash front pockets.

Men's S – 3XL

Women's XS – 2XL

Price by Quantity

1-99 \$45.00

100-249 \$40.60

250-499 \$38.40

500+ \$36.00

(A)



	M	W
127 winter white	X	∞
369 vintage red	X	*
575 navy	†	β
689 amazon	#	X
995 black	†	*

* not available in L, XL, 2XL

† not available in XL, 2XL, 3XL

not available in 2XL

∞ not available in XS, L, XL, 2XL

β not available in XL, 2XL

WILD TO MILD

Keep the weather out, the warmth in.

(M) 18106 (W) 98106

Kenora fleece jacket

100% Polyester. SMARTech™ 300 fabrication.
Contrast pique shoulder and side panel. 1/8" double
needle details. Full zip. Two slash front pockets.

Men's S – 3XL
Women's XS – 2XL

Price by Quantity

1-99 \$30.00
100-249 \$27.00
2250-499 \$25.60
500+ \$24.00



	M	W
125 white	✓	✓
575 navy	✓	✓
995 black	✓	✓



125

995



PROTECT YOUR WHOLE CREW.

Whatever the weather, **you're covered.**



SMARTech™ 300 Series

Highly technical product including bonded fabrics and finishing treatments.

(M) 18134 (W) 98134

Seattle – Recycled polyester fleece jacket

80% Recycled polyester fleece / 20% Polyester fleece. 220 g/m² (10.8 oz/linear yd). Mock coverstitching on sleeve and body for detailing. Contrast taping on inside neck and along zipper. Full zip front. Zip front side pockets.

Men's S – 3XL

Women's XS – 2XL

Price by Quantity

1-99 \$37.80

100-249 \$34.00

250-499 \$32.00

500+ \$30.00

(A)



	M	W
127 winter white	<input checked="" type="checkbox"/>	<input checked="" type="checkbox"/>
369 vintage red	<input checked="" type="checkbox"/>	<input checked="" type="checkbox"/>
661 moss	<input checked="" type="checkbox"/>	<input checked="" type="checkbox"/>
575 navy	<input checked="" type="checkbox"/>	<input checked="" type="checkbox"/>
995 black	<input checked="" type="checkbox"/>	<input checked="" type="checkbox"/>

FULL STOCK!



go to www.trimarksportswear.com/evolve to find out more

369



Comfort you'll appreciate all year round.

Seattle jacket from **\$30.00**



575



127



661

A

LAYER UP

OUR MICROFIBRE FLEECE IS GREAT OVER A SHIRT OR SWEATER.



vest from
\$25.00



A.(M)18593 (W)98593

Full zip bonded microfleece vest

Face: 100% Polyester honeycomb mesh. Back: 100% Polyester 250 g/m² (7.4 oz). Anti-pill microfleece. Full zip front fleece with YKK™ zipper. Contrast piping detail. Spandex binding on armholes. Flatlock stitching detail. Two zippered front pockets. Shock cord drawstring at hem. Contrast grosgrain ribbon at neck. Tapered at waist (women's).

Men's S – 3XL

Women's XS – 2XL

Price by Quantity

1-99 \$31.40

100-249 \$28.40

250-499 \$26.80

500+ \$25.00

(A)



	M	W
275 spark	✓	✓
390 chili	✓	✓
476 bay blue	✓	✓
575 navy	✗	✓
995 black	✗	*

* not available in S



Anti-pill

The fabric is treated to prevent pilling.



B.(M) I8346**Logan – recycled polyester
1/4 zip jacket**

80% Recycled polyester fleece / 20% polyester fleece. 220 g/m² (10.8 oz/linear yd). Recycled polyester fleece with anti-pill. Contrast taping on inside neck and along zipper. Raglan sleeve. Hidden zipped front side pockets.

Men's S – 3XL

Price by Quantity

1-99 \$37.60

100-249 \$34.00

250-499 \$32.00

500+ \$30.00

(A)



	M
661 moss	<input checked="" type="checkbox"/>
575 navy	<input checked="" type="checkbox"/>



go to www.trimarksportsweat.com/evolve
to find out more

C



476

D.(W) 98246**Augusta – Recycled polyester
fleece hoody**

80% Recycled polyester fleece / 20% Polyester fleece. 220 g/m² (10.8 oz/linear yd). Recycled polyester fleece with anti-pill. Cut and sew details on sleeve and body with coverstitching. Full zipped front. Hidden zipped front side pockets. Contrast taping on inside collar and along zipper.

Women's XS – 2XL

Price by Quantity

1-99 \$37.60

100-249 \$34.00

250-499 \$32.00

500+ \$30.00

(A)



	W
575 navy	<input checked="" type="checkbox"/>
661 moss	<input checked="" type="checkbox"/>
995 black	<input checked="" type="checkbox"/>



go to www.trimarksportsweat.com/evolve
to find out more

B



575

C.(M) I8201**Full zip microfleece hoodie**

100% Polyester anti-pill microfleece, 250g/m² (7.4 oz). Drawcord and toggle at waist. Spandex trim around hood. Anti-pill fleece. Contrast colour grosgrain ribbon at neck.

Men's XS – 3XL

Price by Quantity

1-99 \$31.40

100-249 \$28.40

250-499 \$26.80

500+ \$25.00

(A)



	M
275 spark	<input checked="" type="checkbox"/>
476 bay blue	<input type="checkbox"/>
660 dark citron green	<input type="checkbox"/>

* not available in 2XL
† not available in M

D



661

A.(M) 18547 (W)98547

Joffre – Recycled Polyester Fleece Vest

80% Recycled polyester fleece / 20% Polyester fleece. 220 g/m² (10.8 oz/linear yd). Recycled polyester fleece with anti-pill. Contrast taping on inside neck and along zipper. Spandex along armhole. Right chest pocket. Hidden zipped front side pockets.

Men's S – 3XL

Women's XS – 2XL

Price by Quantity

1-99	\$37.60
100-249	\$34.00
250-499	\$32.00
500+	\$30.00



	M	W
127 winter white	X	✓
369 vintage red	*	#
661 moss	†	#
575 navy	✓	X
995 black	✓	✓

* not available in M
† not available in XL
not available in XS



661

Whether its crisp, or cold... Layer up.



B

476

B.(M) 18592 (W)98592

Alpine fleece vest

100% Polyester anti-pill microfleece. 100% Polyester full body mesh lining, 250 g/m² (7.4 oz). Inside embroidery access at back neck. Interior security pocket. Constructed of anti-pill microfleece. Interacts with style 19297/99297 and 19299/99299 to create 3-in-1. Princess seam lines enhance the feminine silhouette (women's).

Men's XS – 3XL

Women's S – 2XL

Price by Quantity

1-99	\$37.60
100-249	\$34.00
250-499	\$32.00
500+	\$30.00



	M	W
356 red	*	†
390 chili	✓	X
476 bay blue	✓	✓
550 metro blue	X	✓
575 navy	X	✓
695 woodland green	✓	✓
995 black	X	✓

* not available in 2XL
† not available in L, XL



UP TO
52%
OFF

PROFESSIONAL MEETS PRACTICAL

bonded vest from

\$26.00

C.(M)12901 (W)92901

Bonded vest

100% Micro polyester. 100% bonded micro-poly. Full mesh lining. Hidden embroidery pocket. Bottom bungee cord with cord keepers. Two-way front zipper. Wind and water resistant. Slightly scooped back. Slightly tapered waist (women's).

Men's S – 3XL

Women's S – XL

Price by Quantity

1-99	\$32.60
100-249	\$29.40
250-499	\$27.80
500+	\$26.00



	M	W
182 chestnut	<input checked="" type="checkbox"/>	<input checked="" type="checkbox"/>
369 vintage red	<input checked="" type="checkbox"/>	<input checked="" type="checkbox"/>
995 black	<input checked="" type="checkbox"/>	<input checked="" type="checkbox"/>

* not available in S, M

(W)92102

Half zip micro polyester windshirt

Shell: 100% Micro polyester. Body lining: 100% Polyester tricot. Sleeve lining: 100% Polyester. Fully lined and lightweight. Wind and water repellent. Half zip front. Two front pockets with concealed zipper. Contrasting spandex binding at sleeve opening. Draw cord at hem. Contrasting stretch knit at side front and underarm.

Women's XS - 2XL

Price by Quantity

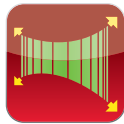
1-99	\$37.60
100-249	\$34.00
250-499	\$32.00
500+	\$30.00



	W
229 sunset / titanium	<input type="checkbox"/>
290 sienna / black	<input checked="" type="checkbox"/>
995 black / titanium	<input checked="" type="checkbox"/>

* not available in S, M

Golfwear that extends past the back nine.



Stretch

Fabric content provides mechanical stretch allowing for a more comfortable fit.



229



476



369

575

A lightweight and durable finished look that's perfect all year long.

Using the same fabrication as our very popular EZ-Care™ line, and pre-shrunk this shirt is ready for anything.

**(A) I9502
Softshell jacket**

Three layer bonded fabric: 100% Polyester microfleece bonded with matte finish micro fiber. 130g micro poly fleece. Adjustable drawcord and toggles at hem. Left arm pocket with water proof zip. Unisex fit.

Adult's XS - 3XL

Price by Quantity

1-99	\$62.60
100-249	\$56.40
250-499	\$53.40
500+	\$50.00



(A)

369 vintage red	<input checked="" type="checkbox"/>
476 bay blue	<input checked="" type="checkbox"/>
575 navy	<input type="checkbox"/>



Softshell jacket starting from \$50

* not available in XL, 2XL

(M)718000 (W)798000

Dorado bonded full zip pockets

100% Polyester, bonded micro fleece. Two zippered front pockets. Bonded, two-layer fabrication. Reflective print on back. Reflective Elevate icon on sleeve.

Men's S - 3XL

Women's S - XL

Price by Quantity

1-99 \$49.80

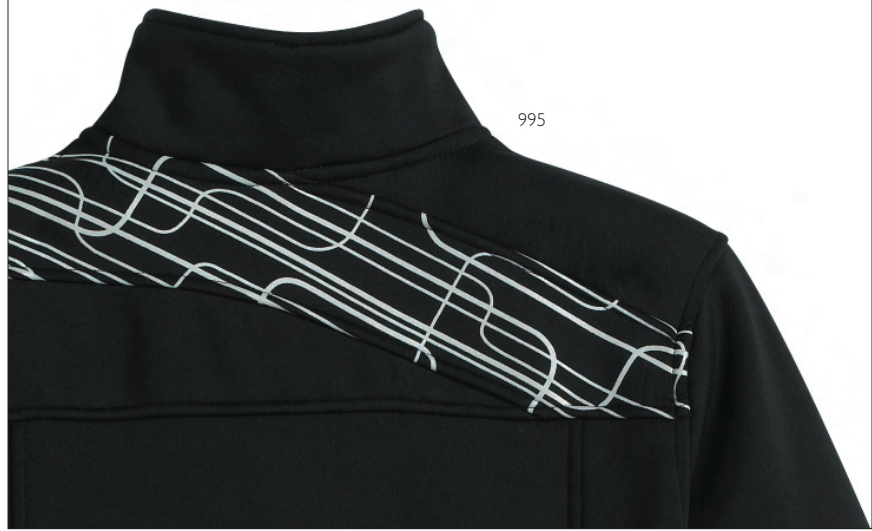
100-249 \$45.00

250-499 \$42.40

500+ \$39.80

(A)

	M	W
125 white	✓	✓
575 navy	✓	✓
995 black	✓	✗



995



575

full zip from
\$39.80



125



bonded

Two fabrics laminated into one, creating a synergistic fabric that has the properties of both.





(M)717001 (W)797001

Orion 1/4 Zip Mock

100% Polyester; rib double knit - textured face/flat back. Contrast colour blocking on sleeve. Raglan sleeves. Reflective Elevate icon on sleeve.

Men's S – 3XL

Women's XS – L

Price by Quantity

1-99 \$25.00

100-249 \$22.60

250-499 \$21.40

500+ \$20.00

(A)

	M	W
125 white	✓	∞
370 varsity red	*	X
575 navy	†	✓
995 black	#	✓

* not available in 3XL
 † not available in 2XL
 # not available in XL, 2XL
 ∞ not available in L

TREAT THEM TO A
**MODERN,
 ACTIVE PIECE**



1/4 zip from
\$20.00



EZ-Care™

In the washer, in the dryer, on your back virtually wrinkle free.



A. (A)19814 (Y)59814

Melton jacket with leather striped sleeves

Shell: 100% Polyester 300D Oxford, water resistant coating. Back and sleeve lining: 90T Nylon quilted to 4oz polyfill. Front lining: 100% poly microfleece quilted to 4oz polyfill. YKK™ front zipper. Rib knit collar and pocket welts. Inner rib knit wind blocker cuff. Interior mesh pockets. Drawcord with toggles at hem. Full embroidery access zipper.

Adult's S - 3XL
Youth JRS - JRL

Price by Quantity

1-99 \$72.60
100-249 \$65.40
250-499 \$61.80
500+ \$58.00



	A	Y
403 navy / white / red	<input checked="" type="checkbox"/>	*
575 navy / white / navy	<input checked="" type="checkbox"/>	<input checked="" type="checkbox"/>
904 black / white / red	<input checked="" type="checkbox"/>	*
906 black / white / royal blue	<input checked="" type="checkbox"/>	<input checked="" type="checkbox"/>
932 heather / vintage white / black	<input checked="" type="checkbox"/>	<input checked="" type="checkbox"/>

* not available in S, L



WEAR WITH PRIDE



B. (M)12311 (Y)52311

Track jacket with contrast taping

100% Polyester. Water resistant fabrication. Wind resistant. Soft and lightweight. Fully lined sleeves for easier on and off. Body is 1/2 mesh lined. Two front zippered pockets. Back vent for increased breathability. Contrast tri-coloured shoulder taping. Inside pocket with Self-adjusting closure. Elasticized cuff.

Men's S – 3XL
Youth JRS – JRL

Price by Quantity

1-99 \$32.60
100-249 \$29.40
250-499 \$27.80
500+ \$26.00



	A	Y
403 navy / team red / white	*	✓
404 navy / silver / white	X	✓
901 black / charcoal / white	X	✓
904 black / team red / white	X	✓
906 black / royal blue / white	✓	✓

* not available in M, XL

C. (M)12321 (Y)52321

Track pant with contrast taping

100% polyester. Water resistant fabrication. Wind resistant. Soft and lightweight fully lined in mesh and nylon for easier on and off. 5" Zippered gusset. Contrast tri-coloured taping along gusset two front zippered pockets. One back zippered pocket.

Men's S – 3XL
Youth JRS – JRL

Price by Quantity

1-99 \$22.40
100-249 \$20.20
250-499 \$19.20
500+ \$17.80



	A	Y
403 navy / team red / white	✓	✓
404 navy / silver / white	✓	✓
901 black / charcoal / white	*	✓
904 black / team red / white	✓	*
906 black / royal blue / white	✓	✓

* not available in S

Get your game on starting from

\$43.80*

* Combination Jacket & Pants price.



THE COMPLETE TEAM PIECE.

Whatever your budget, this suit is just right for your team.

under \$20



from
\$18.00

45104 • P.46



from
\$11.20

45312 • P.48



from
\$18.00

45303 • P.48

\$20 - \$40



from
\$25.60

45102 • P.46



from
\$35.00

45308 • P.47



from
\$38.80

45309 • P.47

over \$40



from
\$43.40

45801 • P.45



from
\$49.00

45800 • P.45

Find our extensive accessories collection online @
WWW.TRIMARKSPORTSWEAR.COM

A.45800

Cotton terry bath robe – unisex

100% Cotton. Velour/loop fabrication. Shawl collar styling. Double belt loop for adjustable height. Fold back cuff to adjust sleeve length. Two large patch hip pockets. Locker loop at back neck.

Unisex XS-M / L-2XL

Price by Quantity

1-99	\$61.40
100-249	\$55.40
250-499	\$52.20
500+	\$49.00

(A)

125 white



A



125

FUN, WARM & COZY FOR ALL...

B.45801

Cotton waffle bath robe – unisex

100% Cotton. Waffle fabrication. Kimono collar styling. Double belt loop for adjustable height. Fold back cuff to adjust sleeve length. Two large patch hip pockets. Locker loop at back neck.

Unisex XS-M / L-2XL

Price by Quantity

1-99	\$54.40
100-249	\$49.00
250-499	\$46.40
500+	\$43.40

(A)

125 white



B



125



A. 45102

Polar fleece blanket

100% Polyester 250 g/m² (7.4 oz) Anti-pill microfleece. Generous size. Clean finished edges with coverstitching.

Unisex one size – 58" X 80"

Price by Quantity

1-99	\$32.00
100-249	\$28.80
250-499	\$27.20
500+	\$25.60

(A)



390 chili	<input checked="" type="checkbox"/>
575 navy	<input checked="" type="checkbox"/>
990 charcoal	<input checked="" type="checkbox"/>
995 black	<input checked="" type="checkbox"/>



Ultra comfortable and very durable... The ideal accessory.

B. 45104

Fleece blanket

100% Polyester, low-pill, fleece, 280g/m² (7.4 oz). Surged edge. Nylon webbing carry strap. Convenient & portable.

Unisex one size - 50" x 60"

Price by Quantity

1-99	\$22.60
100-249	\$20.40
250-499	\$19.40
500+	\$18.00

(A)



990 charcoal	<input checked="" type="checkbox"/>
--------------	-------------------------------------





C. 45308

Nylon large duffel

1680D Nylon – highly durable, abrasion resistant fabric. Padded carry handles on top and ends. Adjustable and detachable padded shoulder strap. Inner compression packing strap with buckle. Contoured, textured shoulder strap pad.

12"D x 22"L x 11"H

Price by Quantity

1-99	\$43.80
100-249	\$39.60
250-499	\$37.40
500+	\$35.00

(A)

390 chili



bags from
\$35.00

CARRY IT ALL WITH
**BACK
SAVING
EASE.**

D.45309

Nylon padded messenger bag

1680D Nylon – highly durable, abrasion resistant fabric. Embroidery access on front flap. Padded laptop compartment. Detachable padded shoulder strap. Rubber; abrasion-resistant bottom. Padded foam back. Adjustable waist strap. Velcro and buckle front closure. Various compartments for writing tools. And business cards. Zippered front pocket.

16 1/2" L x 6" W x 12" H

Price by Quantity

1-99	\$48.60
100-249	\$43.80
250-499	\$41.40
500+	\$38.80

(A)



- 390 chili
- 478 reflection
- 995 black



A. 45303

Laptop protector

1680D Nylon – highly durable, abrasion resistant fabric. Padded laptop compartment. Padded carry handles. Adjustable detachable shoulder strap with padded textured shoulder pad. Two Zippered exterior pockets. Rubberized and texturized bottom. Fits most 15 inch screen laptops.

16 1/2"W x 11 1/2"H x 2 1/2"D

Price by Quantity

1-99 \$22.60

100-249 \$20.40

250-499 \$19.40

500+ \$18.00

(A)



- 390 chili
- 478 reflection



390

Highly durable nylon
will shoulder the load for years.

BUSINESS CLASS

B. 45312

Nylon padfolio

1680D Nylon – highly durable, abrasion resistant fabric. Zippered padfolio. Pen slot. Slot for pad of paper. Two inner filing compartments. Business card holder slots. Front pocket for decoration.

11"D x 11"W x 14"H

Price by Quantity

1-99 \$14.00

100-249 \$12.60

250-499 \$12.00

500+ \$11.20

(A)



- 950 titanium
- 995 black



995

950

style number index

styles	pg #	styles	pg #	styles	pg #	styles	pg #	styles	pg #	styles	pg #
12205	27	16501	11	18106	32	45800	45	96435	5	98134	33
12208	28	16502	9	18134	33	45801	45	96472	4	98246	35
12311	43	16503	10	18201	35	52311	43	96501	11	98547	36
12321	43	16601	17	18346	35	52321	43	96502	9	98592	36
12778	29	16625	17	18547	36	59814	42	96503	10	98593	34
12901	37	16716	16	18592	36	92102	38	96625	17	717001	41
12903	30	16792	12	18593	34	92778	29	96792	12	717002	21
16268	6	17301	23	19502	39	92901	37	97301	23	717003	20
16328	13	17303	24	19814	42	92903	30	97302	24	718000	40
16329	8	17460	25	45102	46	96268	6	97303	24	797001	41
16330	14	17736	25	45104	46	96328	13	97460	25	797002	21
16369	7	17803	18	45303	48	96329	8	97803	18	797003	20
16379	15	17805	19	45308	47	96330	14	97867	3	798000	40
16435	5	17867	3	45309	47	96369	7	98105	31		
16472	4	18105	31	45312	48	96379	15	98106	32		

sizing chart

We encourage the use of sizing samples to have a more accurate sizing for our styles. To that end we offer samples at a reduced price. There is no extra charge on the larger sizes for in-stock items.

tops & jackets

Men's	XS	S	M	L	XL	2XL	3XL	4XL
to fit neck	13-13.5	14-14.5	15-15.5	16-16.5	17-17.5	17.5-18	18.5-19	19.5-20
to fit chest	33-35	36-38	39-41	42-44	45-48	49-52	53-56	57-60
to fit sleeve length	32	33-33.5	34-34.5	35-35.5	36-36.5	37-37.5	38-38.5	38.5-39

Women's	XS	S	M	L	XL	2XL
sizing	2-4	6-8	10-12	14-16	18	20
to fit chest	30-32	33-35	36-38	39-41	42-44	45-47
to fit sleeve length	29.5-30	30-30.5	31-31.5	32-32.5	32.5-33	33-33.5

Youth	JRS	JRM	JRL	JRXL
sizing	8-10	10-12	12-14	14-16
to fit chest	28-29	30-31	32-33	34-35
to fit sleeve length	26-26.5	27-27.5	28-28.5	29-29.5

How to find your size:

To measure accurately, keep the tape measure taut, but don't pull it tight. Get a friend to help if possible. Measure over well fitting garments.

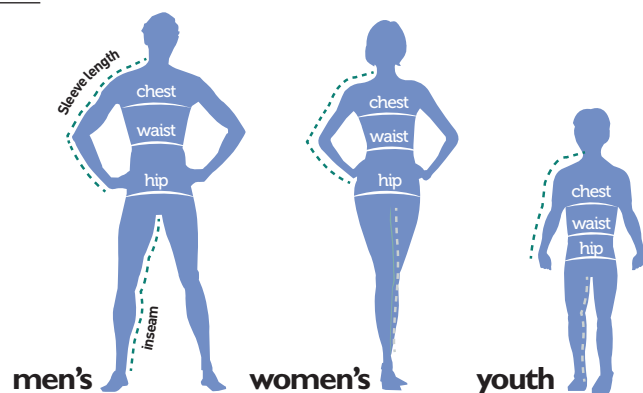
Chest: measure around the fullest part of the chest, keeping the tape parallel to the floor.

Arm: With hand on hip, measure from centre back at the neck, across the shoulder, elbow, down to the wrist bone.

Waist: bend to side; measure where body curves – even if you wear your pants lower.

Hips: with feet shoulder width apart, measure the fullest part of hip/thigh area.

Inseam: measure inside leg seam of pants from crotch to hem.



35TH YEAR OF BEING
**THE NUMBER
ONE CHOICE**

**1
ONE**

FOR LOGO APPAREL
IN CANADA

In today's economy, customers are more value sensitive than ever... budgets are stretched and we're all looking for **choices that work!**

The Trimark Spring '10 Value Collection can help - great apparel, great stock levels... at **great prices!**

TRIMARK
SPORTSWEAR GROUP

WWW.TRIMARKSPORTSWEAR.COM



BRANDS THAT FIT.

makin' it
easy
for you